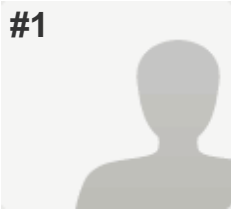


#1

**INCOMPLETE****Collector:** Web Link 1 (Web Link)**Started:** Tuesday, November 10, 2015 10:44:51 AM**Last Modified:** Tuesday, November 10, 2015 10:45:15 AM**Time Spent:** 00:00:23**IP Address:** 12.229.11.62

## PAGE 1

**Q1: Do you offer special waste collection options for your area (e.g. your county, municipality, and/or region)?**

Yes

Examples of special wastes include household hazardous waste, used oil, conditionally exempt small quantity generator hazardous waste, and construction and demolition waste.

## PAGE 2

**Q2: Please identify the geographic area you service (e.g. counties, municipalities, and/or regions):**

Respondent skipped this question

**Q3: Please identify what waste types you collect. Please select all that apply.**

Respondent skipped this question

**Q4: What type(s) of collection option(s) are currently offered? Please select all that apply.**

Respondent skipped this question

**Q5: For one day collections, are materials stored overnight?**

Respondent skipped this question

**Q6: For permanent collections, how long are materials typically stored before shipment? Please select all that apply. Identify specific waste types in the comment field if the duration varies based on waste types collected.**

Respondent skipped this question

**Q7: Are the collection option(s) offered expected to change?**

Respondent skipped this question

**Q8: How many years have the current collection options been offered?**

Respondent skipped this question

**Q9: For permanent collections, approximately how many hours of collection are offered weekly, on average? Please select the most accurate option.**

Respondent skipped this question

**Q10: Are weekend collection hours offered for most materials?**

Respondent skipped this question

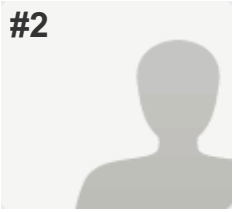
**Q11: Are collection options limited to warmer months (e.g. April through October or May through September)?**

Respondent skipped this question

## Local Special Waste Collections

<b>Q12: Where are collections located? Please select all that apply. Identify specific waste types in the comment field if the collection locations are limited to specific waste types(s).</b>	<i>Respondent skipped this question</i>
<b>Q13: Is access to overnight storage locations restricted?</b>	<i>Respondent skipped this question</i>
<b>Q14: Do overnight storage locations possess containment adequate to collect spills and prevent release of the special waste constituents to a drain or the ground?</b>	<i>Respondent skipped this question</i>
<b>Q15: Please provide a brief description of how the collections identified are funded:</b>	<i>Respondent skipped this question</i>
<b>Q16: Are collections options offered for small business, school, municipal, church, and/or non-profit waste types? If yes, but waste types are limited, please explain which waste types are accepted from non-household locations?</b>	<i>Respondent skipped this question</i>
<b>Q17: If collections are offered for non-household waste, is a fee involved?</b>	<i>Respondent skipped this question</i>
<b>Q18: Are collection options offered for households outside of the county, municipality, or region providing funding for a fee?</b>	<i>Respondent skipped this question</i>
<b>Q19: Who operates the collection(s)?</b>	<i>Respondent skipped this question</i>
<b>Q20: What materials are most difficult to handle? Please select all that apply.</b>	<i>Respondent skipped this question</i>
<b>Q21: Please provide your contact information:</b>	<i>Respondent skipped this question</i>

#2



**COMPLETE**

**Collector:** Web Link 1 (Web Link)

**Started:** Tuesday, November 10, 2015 10:44:29 AM

**Last Modified:** Tuesday, November 10, 2015 10:55:13 AM

**Time Spent:** 00:10:43

**IP Address:** 173.241.123.69

---

PAGE 1

---

**Q1: Do you offer special waste collection options for your area (e.g. your county, municipality, and/or region)?**

Yes

Examples of special wastes include household hazardous waste, used oil, conditionally exempt small quantity generator hazardous waste, and construction and demolition waste.

---

PAGE 2

---

**Q2: Please identify the geographic area you service (e.g. counties, municipalities, and/or regions):**

Clinton County

---

## Local Special Waste Collections

**Q3: Please identify what waste types you collect. Please select all that apply.**

Pharmaceuticals/Medications,  
Electronics other than TVs or CRTs ,  
TVs and/or CRTs, Drywall, Shingles, Pallets,  
Lead Acid Batteries,  
Batteries other than Lead Acid Batteries,  
Light Bulbs,  
Thermostats or other Devices containing Elemental Mercury  
,  
Sharps/Needles,  
Used Oil (Transmission Fluid, Motor Oil, Cutting Oil) ,  
Antifreeze, Corrosive Material (Acids/Bases),  
Solvent Based Paints & Stains , Gas & Fuel Oil ,  
Solvents, Toner, Appliances containing Freon ,  
Pesticides, Asbestos, Smoke Alarms,  
Household Cleaners, Propane Canisters,  
Fire Extinguishers, Lighter Fluid & Lamp Oil ,  
Comments:  
We host two collection events each year for all Clinton County residents.

**Q4: What type(s) of collection option(s) are currently offered? Please select all that apply.**

One day collection location(s)

**Q5: For one day collections, are materials stored overnight?**

No,  
Comments:  
All vendors clear the site by the end of the collection day per our property use agreements.

**Q6: For permanent collections, how long are materials typically stored before shipment? Please select all that apply. Identify specific waste types in the comment field if the duration varies based on waste types collected.**

*Respondent skipped this question*

**Q7: Are the collection option(s) offered expected to change?**

Yes,  
Please explain the reason prompting the change:  
We are phasing a few items out of our fall collection event due to decreased participation. We have been hosting these collection events since 1999.

**Q8: How many years have the current collection options been offered?**

More than 5,  
Comments: We began this program in 1999

## Local Special Waste Collections

**Q9: For permanent collections, approximately how many hours of collection are offered weekly, on average? Please select the most accurate option.**

*Respondent skipped this question*

**Q10: Are weekend collection hours offered for most materials?**

Yes,

Comments:  
We host both of our one day collections on Saturdays only.

**Q11: Are collection options limited to warmer months (e.g. April through October or May through September)?**

Yes,

Please specify month(s) when collections are offered if answering yes:  
April/May and August/September

**Q12: Where are collections located? Please select all that apply. Identify specific waste types in the comment field if the collection locations are limited to specific waste types(s).**

Other Municipal Property, Landfill(s)

**Q13: Is access to overnight storage locations restricted?**

Yes

**Q14: Do overnight storage locations possess containment adequate to collect spills and prevent release of the special waste constituents to a drain or the ground?**

Comments:  
N/A as we do not store anything overnight.

**Q15: Please provide a brief description of how the collections identified are funded:**

Through our tipping fees provided by the privately owned landfills within our County. Residents pay a very nominal fee for some items.

**Q16: Are collections options offered for small business, school, municipal, church, and/or non-profit waste types? If yes, but waste types are limited, please explain which waste types are accepted from non-household locations?**

Yes,

Explain which types are accepted from non-household locations:  
We accept hazardous waste from businesses and charge them the per pound fee from our contract with our vendor.

**Q17: If collections are offered for non-household waste, is a fee involved?**

Yes,

Comments:  
Per pound fee only - we do not charge them for transportation or labor.

**Q18: Are collection options offered for households outside of the county, municipality, or region providing funding for a fee?**

No

**Q19: Who operates the collection(s)?**

Disposal Vendor, Location Hosting Collection,  
Municipal Employees,

Comments:  
We work collaboratively with County staff, site staff, community volunteers and our vendors.

## Local Special Waste Collections

**Q20: What materials are most difficult to handle?**  
**Please select all that apply.**

TVs and/or CRTs,

Please explain the difficulties:

The cost to recycle TVs and CRTs has really impacted our budget. We just went out for bid on our electronics collection and only two (2) vendors submitted proposals. We currently landfill the drywall, shingles and pallets. All the HHW items are handled by our vendor per our contract.

---

**Q21: Please provide your contact information:**

Name

Kate Neese

Affiliation (Company or Municipality)

Clinton County Dept of Waste Management

Phone

(989) 224-5186

E-mail

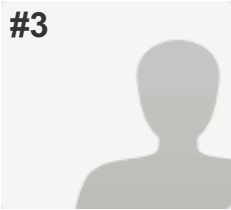
neesek@clinton-county.org

Special Waste Collection Website

<http://www.clinton-county.org/Departments/DepartmentofWasteManagementHomePage/CurrentEvents.aspx>

---

#3



**COMPLETE**

**Collector:** Web Link 1 (Web Link)

**Started:** Tuesday, November 10, 2015 10:50:36 AM

**Last Modified:** Tuesday, November 10, 2015 11:03:20 AM

**Time Spent:** 00:12:43

**IP Address:** 50.249.176.185

PAGE 1

**Q1: Do you offer special waste collection options for your area (e.g. your county, municipality, and/or region)?**

Yes

Examples of special wastes include household hazardous waste, used oil, conditionally exempt small quantity generator hazardous waste, and construction and demolition waste.

PAGE 2

**Q2: Please identify the geographic area you service (e.g. counties, municipalities, and/or regions):**

City of Northville, Northville Township and City of Livonia

**Q3: Please identify what waste types you collect. Please select all that apply.**

Pharmaceuticals/Medications,  
Electronics other than TVs or CRTs ,  
TVs and/or CRTs, Lead Acid Batteries,  
Batteries other than Lead Acid Batteries,  
Light Bulbs,  
Thermostats or other Devices containing Elemental Mercury  
,  
Used Oil (Transmission Fluid, Motor Oil, Cutting Oil) ,  
Antifreeze, Solvent Based Paints & Stains ,  
Latex Paints, Gas & Fuel Oil, Solvents, Pesticides,  
Smoke Alarms, Household Cleaners,  
Propane Canisters, Fire Extinguishers,  
Lighter Fluid & Lamp Oil

**Q4: What type(s) of collection option(s) are currently offered? Please select all that apply.**

One day collection location(s)

## Local Special Waste Collections

<b>Q5: For one day collections, are materials stored overnight?</b>	No,  Comments: Most of the time material leaves at the end of the event. However, sometimes the material is picked up and removed the following week.
<b>Q6: For permanent collections, how long are materials typically stored before shipment? Please select all that apply. Identify specific waste types in the comment field if the duration varies based on waste types collected.</b>	Not offered
<b>Q7: Are the collection option(s) offered expected to change?</b>	No
<b>Q8: How many years have the current collection options been offered?</b>	More than 5
<b>Q9: For permanent collections, approximately how many hours of collection are offered weekly, on average? Please select the most accurate option.</b>	Not offered
<b>Q10: Are weekend collection hours offered for most materials?</b>	No
<b>Q11: Are collection options limited to warmer months (e.g. April through October or May through September)?</b>	Yes
<b>Q12: Where are collections located? Please select all that apply. Identify specific waste types in the comment field if the collection locations are limited to specific waste types(s).</b>	Municipal Maintenance Building(s)
<b>Q13: Is access to overnight storage locations restricted?</b>	Yes
<b>Q14: Do overnight storage locations possess containment adequate to collect spills and prevent release of the special waste constituents to a drain or the ground?</b>	No
<b>Q15: Please provide a brief description of how the collections identified are funded:</b>  Part of the City's solid waste fee that is charged to residents for weekly residential trash collection.	
<b>Q16: Are collections options offered for small business, school, municipal, church, and/or non-profit waste types? If yes, but waste types are limited, please explain which waste types are accepted from non-household locations?</b>	No
<b>Q17: If collections are offered for non-household waste, is a fee involved?</b>	Comments: Non-household waste is not collected as a part of our program.
<b>Q18: Are collection options offered for households outside of the county, municipality, or region providing funding for a fee?</b>	No
<b>Q19: Who operates the collection(s)?</b>	Disposal Vendor



## Local Special Waste Collections

**Q20: What materials are most difficult to handle?**  
**Please select all that apply.**

Corrosive Material (Acids/Bases)

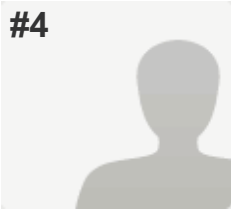
---

**Q21: Please provide your contact information:**

Name	James P. Gallogly, Public Works Director
Affiliation (Company or Municipality)	City of Northville
Phone	248 449-9930
E-mail	jgallogly@ci.northville.mi.us
Special Waste Collection Website	N/A

---

#4



**COMPLETE**

**Collector:** Web Link 1 (Web Link)

**Started:** Tuesday, November 10, 2015 10:57:48 AM

**Last Modified:** Tuesday, November 10, 2015 11:03:58 AM

**Time Spent:** 00:06:09

**IP Address:** 12.229.11.62

PAGE 1

**Q1: Do you offer special waste collection options for your area (e.g. your county, municipality, and/or region)?**

Yes

Examples of special wastes include household hazardous waste, used oil, conditionally exempt small quantity generator hazardous waste, and construction and demolition waste.

PAGE 2

**Q2: Please identify the geographic area you service (e.g. counties, municipalities, and/or regions):**

Wayne County

**Q3: Please identify what waste types you collect. Please select all that apply.**

Pharmaceuticals/Medications,  
Electronics other than TVs or CRTs ,  
TVs and/or CRTs, Lead Acid Batteries,  
Batteries other than Lead Acid Batteries,  
Light Bulbs,  
Thermostats or other Devices containing Elemental Mercury  
,  
Sharps/Needles,  
Used Oil (Transmission Fluid, Motor Oil, Cutting Oil) ,  
Antifreeze, Corrosive Material (Acids/Bases),  
Solvent Based Paints & Stains , Latex Paints,  
Gas & Fuel Oil , Solvents, Pesticides, Asbestos,  
Smoke Alarms, Animal & Vegetable Oil ,  
Household Cleaners, Propane Canisters,  
Fire Extinguishers, Lighter Fluid & Lamp Oil

**Q4: What type(s) of collection option(s) are currently offered? Please select all that apply.**

One day collection location(s)

## Local Special Waste Collections

<b>Q5: For one day collections, are materials stored overnight?</b>	No
<b>Q6: For permanent collections, how long are materials typically stored before shipment? Please select all that apply. Identify specific waste types in the comment field if the duration varies based on waste types collected.</b>	Not offered
<b>Q7: Are the collection option(s) offered expected to change?</b>	No
<b>Q8: How many years have the current collection options been offered?</b>	More than 5
<b>Q9: For permanent collections, approximately how many hours of collection are offered weekly, on average? Please select the most accurate option.</b>	Not offered
<b>Q10: Are weekend collection hours offered for most materials?</b>	Yes,  Comments: Four Saturday collections per year.
<b>Q11: Are collection options limited to warmer months (e.g. April through October or May through September)?</b>	Yes,  Please specify month(s) when collections are offered if answering yes: April, June, August, and October
<b>Q12: Where are collections located? Please select all that apply. Identify specific waste types in the comment field if the collection locations are limited to specific waste types(s).</b>	Other,  Waste type(s) and/or other comments: Parking lots of shopping center, community colleges, and local DPW's.
<b>Q13: Is access to overnight storage locations restricted?</b>	Yes
<b>Q14: Do overnight storage locations possess containment adequate to collect spills and prevent release of the special waste constituents to a drain or the ground?</b>	Comments: N/A
<b>Q15: Please provide a brief description of how the collections identified are funded:</b>  Through tipping fees collected by Wayne County for MSW disposed of at the Type II landfills.	
<b>Q16: Are collections options offered for small business, school, municipal, church, and/or non-profit waste types? If yes, but waste types are limited, please explain which waste types are accepted from non-household locations?</b>	No
<b>Q17: If collections are offered for non-household waste, is a fee involved?</b>	<i>Respondent skipped this question</i>
<b>Q18: Are collection options offered for households outside of the county, municipality, or region providing funding for a fee?</b>	No
<b>Q19: Who operates the collection(s)?</b>	Disposal Vendor

## Local Special Waste Collections

**Q20: What materials are most difficult to handle?**  
**Please select all that apply.**

Please explain the difficulties:  
We are not aware of our contractor having any  
difficulty in handling the items.

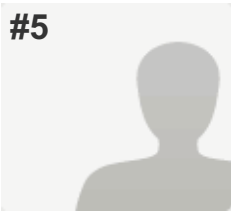
---

**Q21: Please provide your contact information:**

Name	Mary Vangieson
Affiliation (Company or Municipality)	Wayne County DPS
Phone	734-326-4494
E-mail	mvangies@waynecounty.com
Special Waste Collection Website	waynecounty.com

---

#5

**COMPLETE****Collector:** Web Link 1 (Web Link)**Started:** Tuesday, November 10, 2015 11:00:02 AM**Last Modified:** Tuesday, November 10, 2015 11:04:51 AM**Time Spent:** 00:04:49**IP Address:** 64.119.49.60

## PAGE 1

**Q1: Do you offer special waste collection options for your area (e.g. your county, municipality, and/or region)?**

Yes

Examples of special wastes include household hazardous waste, used oil, conditionally exempt small quantity generator hazardous waste, and construction and demolition waste.

## PAGE 2

**Q2: Please identify the geographic area you service (e.g. counties, municipalities, and/or regions):**

Bay County

**Q3: Please identify what waste types you collect. Please select all that apply.**

Pharmaceuticals/Medications, Lead Acid Batteries, Batteries other than Lead Acid Batteries, Used Oil (Transmission Fluid, Motor Oil, Cutting Oil), Antifreeze, Solvent Based Paints & Stains, Gas & Fuel Oil, Solvents, Pesticides, Household Cleaners, Propane Canisters, Lighter Fluid & Lamp Oil

**Q4: What type(s) of collection option(s) are currently offered? Please select all that apply.**

One day collection location(s)

**Q5: For one day collections, are materials stored overnight?**

No

**Q6: For permanent collections, how long are materials typically stored before shipment? Please select all that apply. Identify specific waste types in the comment field if the duration varies based on waste types collected.**

Not offered

**Q7: Are the collection option(s) offered expected to change?**

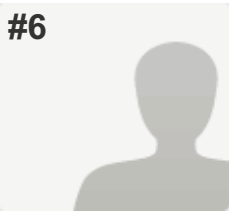
Yes,

Please explain the reason prompting the change:  
We would like to move to a permanent collection mode, but we need to find a funding mechanism to make it happen.

## Local Special Waste Collections

<b>Q8: How many years have the current collection options been offered?</b>	More than 5
<b>Q9: For permanent collections, approximately how many hours of collection are offered weekly, on average? Please select the most accurate option.</b>	Not offered
<b>Q10: Are weekend collection hours offered for most materials?</b>	Yes
<b>Q11: Are collection options limited to warmer months (e.g. April through October or May through September)?</b>	Yes
<b>Q12: Where are collections located? Please select all that apply. Identify specific waste types in the comment field if the collection locations are limited to specific waste types(s).</b>	Municipal Maintenance Building(s)
<b>Q13: Is access to overnight storage locations restricted?</b>	Yes
<b>Q14: Do overnight storage locations possess containment adequate to collect spills and prevent release of the special waste constituents to a drain or the ground?</b>	No
<b>Q15: Please provide a brief description of how the collections identified are funded:</b>	
Currently funded by grants through Dow Chemical.	
<b>Q16: Are collections options offered for small business, school, municipal, church, and/or non-profit waste types? If yes, but waste types are limited, please explain which waste types are accepted from non-household locations?</b>	No
<b>Q17: If collections are offered for non-household waste, is a fee involved?</b>	No
<b>Q18: Are collection options offered for households outside of the county, municipality, or region providing funding for a fee?</b>	No
<b>Q19: Who operates the collection(s)?</b>	Municipal Employees
<b>Q20: What materials are most difficult to handle? Please select all that apply.</b>	Pharmaceuticals/Medications, Electronics other than TVs or CRTs , TVs and/or CRTs, Sharps/Needles, Asbestos
<b>Q21: Please provide your contact information:</b>	
Name	Joel Strasz
Affiliation (Company or Municipality)	Bay County Health Department
Phone	989-895-2018
E-mail	atraszj@baycounty.net

#6

**COMPLETE****Collector:** Web Link 1 (Web Link)**Started:** Tuesday, November 10, 2015 11:11:52 AM**Last Modified:** Tuesday, November 10, 2015 11:17:34 AM**Time Spent:** 00:05:42**IP Address:** 64.20.192.215

## PAGE 1

**Q1: Do you offer special waste collection options for your area (e.g. your county, municipality, and/or region)?**

Yes

Examples of special wastes include household hazardous waste, used oil, conditionally exempt small quantity generator hazardous waste, and construction and demolition waste.

## PAGE 2

**Q2: Please identify the geographic area you service (e.g. counties, municipalities, and/or regions):**

*Respondent skipped this question*

**Q3: Please identify what waste types you collect. Please select all that apply.**

Pharmaceuticals/Medications,  
Electronics other than TVs or CRTs ,  
TVs and/or CRTs, Lead Acid Batteries,  
Batteries other than Lead Acid Batteries ,  
Thermostats or other Devices containing Elemental Mercury  
,  
Sharps/Needles,  
Used Oil (Transmission Fluid, Motor Oil, Cutting Oil) ,  
Antifreeze, Corrosive Material (Acids/Bases),  
Solvent Based Paints & Stains , Gas & Fuel Oil ,  
Solvents, Toner, Appliances containing Freon ,  
Pesticides, Household Cleaners,  
Propane Canisters, Fire Extinguishers,  
Lighter Fluid & Lamp Oil

**Q4: What type(s) of collection option(s) are currently offered? Please select all that apply.**

One day collection location(s)

**Q5: For one day collections, are materials stored overnight?**

No

## Local Special Waste Collections

<b>Q6: For permanent collections, how long are materials typically stored before shipment? Please select all that apply. Identify specific waste types in the comment field if the duration varies based on waste types collected.</b>	Not offered
<b>Q7: Are the collection option(s) offered expected to change?</b>	No
<b>Q8: How many years have the current collection options been offered?</b>	More than 5, Comments: 30 YRS
<b>Q9: For permanent collections, approximately how many hours of collection are offered weekly, on average? Please select the most accurate option.</b>	Not offered
<b>Q10: Are weekend collection hours offered for most materials?</b>	Yes
<b>Q11: Are collection options limited to warmer months (e.g. April through October or May through September)?</b>	No
<b>Q12: Where are collections located? Please select all that apply. Identify specific waste types in the comment field if the collection locations are limited to specific waste types(s).</b>	Other Municipal Property
<b>Q13: Is access to overnight storage locations restricted?</b>	Yes, Comments: NO OVERNIGHT STORAGE
<b>Q14: Do overnight storage locations possess containment adequate to collect spills and prevent release of the special waste constituents to a drain or the ground?</b>	Comments: NO OVERNIGHT STORAGE
<b>Q15: Please provide a brief description of how the collections identified are funded:</b> TIPPING FEES FROM A LOCAL LANDFILL AGREEMENT	
<b>Q16: Are collections options offered for small business, school, municipal, church, and/or non-profit waste types? If yes, but waste types are limited, please explain which waste types are accepted from non-household locations?</b>	No
<b>Q17: If collections are offered for non-household waste, is a fee involved?</b>	Comments: NOT OFFERED
<b>Q18: Are collection options offered for households outside of the county, municipality, or region providing funding for a fee?</b>	No
<b>Q19: Who operates the collection(s)?</b>	Municipal Employees, Disposal Vendor
<b>Q20: What materials are most difficult to handle? Please select all that apply.</b>	Latex Paint, Please explain the difficulties: EXCESSIVE AMOUNT - NON HAZARDOUS



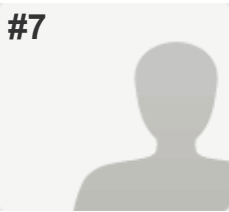
## Local Special Waste Collections

**Q21: Please provide your contact information:**

Name	BOB OVERLEY
Affiliation (Company or Municipality)	CALHOUN COUNTY
Phone	269-969-6399

---

#7



**COMPLETE**

**Collector:** Web Link 1 (Web Link)

**Started:** Tuesday, November 10, 2015 11:16:28 AM

**Last Modified:** Tuesday, November 10, 2015 11:24:37 AM

**Time Spent:** 00:08:09

**IP Address:** 199.150.126.232

PAGE 1

**Q1: Do you offer special waste collection options for your area (e.g. your county, municipality, and/or region)?**

Yes

Examples of special wastes include household hazardous waste, used oil, conditionally exempt small quantity generator hazardous waste, and construction and demolition waste.

PAGE 2

**Q2: Please identify the geographic area you service (e.g. counties, municipalities, and/or regions):**

ionia county

**Q3: Please identify what waste types you collect. Please select all that apply.**

Lead Acid Batteries,  
Batteries other than Lead Acid Batteries,  
Light Bulbs,  
Thermostats or other Devices containing Elemental Mercury  
,  
Used Oil (Transmission Fluid, Motor Oil, Cutting Oil) ,  
Antifreeze, Corrosive Material (Acids/Bases),  
Solvent Based Paints & Stains, Gas & Fuel Oil ,  
Solvents, Toner, Pesticides, Asbestos,  
Smoke Alarms, Animal & Vegetable Oil ,  
Household Cleaners, Propane Canisters,  
Fire Extinguishers, Lighter Fluid & Lamp Oil

**Q4: What type(s) of collection option(s) are currently offered? Please select all that apply.**

Both permanent and 1-day collection location(s) ,  
Please explain materials collected at permanent vs. one day events if both are offered:  
same items at both

**Q5: For one day collections, are materials stored overnight?**

No

## Local Special Waste Collections

<b>Q6: For permanent collections, how long are materials typically stored before shipment? Please select all that apply. Identify specific waste types in the comment field if the duration varies based on waste types collected.</b>	Waste types and/or other comments: during frost free months
<b>Q7: Are the collection option(s) offered expected to change?</b>	No
<b>Q8: How many years have the current collection options been offered?</b>	More than 5
<b>Q9: For permanent collections, approximately how many hours of collection are offered weekly, on average? Please select the most accurate option.</b>	Comments: 8 collection times
<b>Q10: Are weekend collection hours offered for most materials?</b>	Yes
<b>Q11: Are collection options limited to warmer months (e.g. April through October or May through September)?</b>	Yes,  Please specify month(s) when collections are offered if answering yes: april - sept
<b>Q12: Where are collections located? Please select all that apply. Identify specific waste types in the comment field if the collection locations are limited to specific waste types(s).</b>	Other Municipal Property,  Municipal Maintenance Building(s), School(s), Waste type(s) and/or other comments: fire stations
<b>Q13: Is access to overnight storage locations restricted?</b>	Yes
<b>Q14: Do overnight storage locations possess containment adequate to collect spills and prevent release of the special waste constituents to a drain or the ground?</b>	Yes
<b>Q15: Please provide a brief description of how the collections identified are funded:</b>  tipping fees and clean sweep grant	
<b>Q16: Are collections options offered for small business, school, municipal, church, and/or non-profit waste types? If yes, but waste types are limited, please explain which waste types are accepted from non-household locations?</b>	Yes
<b>Q17: If collections are offered for non-household waste, is a fee involved?</b>	Yes,  Comments: at cost
<b>Q18: Are collection options offered for households outside of the county, municipality, or region providing funding for a fee?</b>	Yes,  Comments: clean sweep items from grant funds
<b>Q19: Who operates the collection(s)?</b>	Disposal Vendor

## Local Special Waste Collections

**Q20: What materials are most difficult to handle?**  
**Please select all that apply.**

Pharmaceuticals/Medications, TVs and/or CRTs,  
Sharps/Needles, Latex Paint,  
Please explain the difficulties:  
need a solution for tvs and monitors

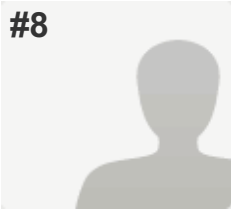
---

**Q21: Please provide your contact information:**

Name	melissa eldridge
Affiliation (Company or Municipality)	ionia conservation district
Phone	616-527-2620
E-mail	melissa.eldridge@mi.nacdnet.net

---

#8

**INCOMPLETE****Collector:** Web Link 1 (Web Link)**Started:** Tuesday, November 10, 2015 11:32:07 AM**Last Modified:** Tuesday, November 10, 2015 11:32:18 AM**Time Spent:** 00:00:11**IP Address:** 198.108.4.105

## PAGE 1

**Q1: Do you offer special waste collection options for your area (e.g. your county, municipality, and/or region)?**

Yes

Examples of special wastes include household hazardous waste, used oil, conditionally exempt small quantity generator hazardous waste, and construction and demolition waste.

## PAGE 2

**Q2: Please identify the geographic area you service (e.g. counties, municipalities, and/or regions):**

Respondent skipped this question

**Q3: Please identify what waste types you collect. Please select all that apply.**

Respondent skipped this question

**Q4: What type(s) of collection option(s) are currently offered? Please select all that apply.**

Respondent skipped this question

**Q5: For one day collections, are materials stored overnight?**

Respondent skipped this question

**Q6: For permanent collections, how long are materials typically stored before shipment? Please select all that apply. Identify specific waste types in the comment field if the duration varies based on waste types collected.**

Respondent skipped this question

**Q7: Are the collection option(s) offered expected to change?**

Respondent skipped this question

**Q8: How many years have the current collection options been offered?**

Respondent skipped this question

**Q9: For permanent collections, approximately how many hours of collection are offered weekly, on average? Please select the most accurate option.**

Respondent skipped this question

**Q10: Are weekend collection hours offered for most materials?**

Respondent skipped this question

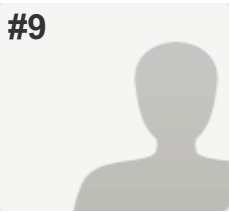
**Q11: Are collection options limited to warmer months (e.g. April through October or May through September)?**

Respondent skipped this question

## Local Special Waste Collections

<b>Q12: Where are collections located? Please select all that apply. Identify specific waste types in the comment field if the collection locations are limited to specific waste types(s).</b>	<i>Respondent skipped this question</i>
<b>Q13: Is access to overnight storage locations restricted?</b>	<i>Respondent skipped this question</i>
<b>Q14: Do overnight storage locations possess containment adequate to collect spills and prevent release of the special waste constituents to a drain or the ground?</b>	<i>Respondent skipped this question</i>
<b>Q15: Please provide a brief description of how the collections identified are funded:</b>	<i>Respondent skipped this question</i>
<b>Q16: Are collections options offered for small business, school, municipal, church, and/or non-profit waste types? If yes, but waste types are limited, please explain which waste types are accepted from non-household locations?</b>	<i>Respondent skipped this question</i>
<b>Q17: If collections are offered for non-household waste, is a fee involved?</b>	<i>Respondent skipped this question</i>
<b>Q18: Are collection options offered for households outside of the county, municipality, or region providing funding for a fee?</b>	<i>Respondent skipped this question</i>
<b>Q19: Who operates the collection(s)?</b>	<i>Respondent skipped this question</i>
<b>Q20: What materials are most difficult to handle? Please select all that apply.</b>	<i>Respondent skipped this question</i>
<b>Q21: Please provide your contact information:</b>	<i>Respondent skipped this question</i>

#9



**COMPLETE**

**Collector:** Web Link 1 (Web Link)

**Started:** Tuesday, November 10, 2015 11:05:22 AM

**Last Modified:** Tuesday, November 10, 2015 11:33:15 AM

**Time Spent:** 00:27:53

**IP Address:** 23.28.231.20

PAGE 1

**Q1: Do you offer special waste collection options for your area (e.g. your county, municipality, and/or region)?**

Yes

Examples of special wastes include household hazardous waste, used oil, conditionally exempt small quantity generator hazardous waste, and construction and demolition waste.

PAGE 2

**Q2: Please identify the geographic area you service (e.g. counties, municipalities, and/or regions):**

Municipality - City of Grosse Pointe Woods

**Q3: Please identify what waste types you collect. Please select all that apply.**

Pharmaceuticals/Medications, Lead Acid Batteries, Batteries other than Lead Acid Batteries, Light Bulbs, Used Oil (Transmission Fluid, Motor Oil, Cutting Oil), Antifreeze, Corrosive Material (Acids/Bases), Solvent Based Paints & Stains, Latex Paints, Gas & Fuel Oil, Solvents, Pesticides, Animal & Vegetable Oil, Household Cleaners, Lighter Fluid & Lamp Oil

**Q4: What type(s) of collection option(s) are currently offered? Please select all that apply.**

Both permanent and 1-day collection location(s), Please explain materials collected at permanent vs. one day events if both are offered: Permanent - Oil, antifreeze, household batteries, car & boat batteries Twice a year - one day events - for all other hazardous waste and paper shredding Have participated in Wayne County tire collection last several years

**Q5: For one day collections, are materials stored overnight?**

No

## Local Special Waste Collections

<b>Q6: For permanent collections, how long are materials typically stored before shipment? Please select all that apply. Identify specific waste types in the comment field if the duration varies based on waste types collected.</b>	Waste types and/or other comments: Picked up as needed
<b>Q7: Are the collection option(s) offered expected to change?</b>	No
<b>Q8: How many years have the current collection options been offered?</b>	More than 5
<b>Q9: For permanent collections, approximately how many hours of collection are offered weekly, on average? Please select the most accurate option.</b>	Not offered
<b>Q10: Are weekend collection hours offered for most materials?</b>	No
<b>Q11: Are collection options limited to warmer months (e.g. April through October or May through September)?</b>	No
<b>Q12: Where are collections located? Please select all that apply. Identify specific waste types in the comment field if the collection locations are limited to specific waste types(s).</b>	Municipal Maintenance Building(s)
<b>Q13: Is access to overnight storage locations restricted?</b>	Comments: n.a.
<b>Q14: Do overnight storage locations possess containment adequate to collect spills and prevent release of the special waste constituents to a drain or the ground?</b>	Comments: n.a.
<b>Q15: Please provide a brief description of how the collections identified are funded:</b>  events scheduled and paid through rubbish collection contract	
<b>Q16: Are collections options offered for small business, school, municipal, church, and/or non-profit waste types? If yes, but waste types are limited, please explain which waste types are accepted from non-household locations?</b>	No,  Explain which types are accepted from non-household locations: local businesses can bring same products as households
<b>Q17: If collections are offered for non-household waste, is a fee involved?</b>	Comments: n.a.
<b>Q18: Are collection options offered for households outside of the county, municipality, or region providing funding for a fee?</b>	No
<b>Q19: Who operates the collection(s)?</b>	Municipal Employees, Location Hosting Collection, Disposal Vendor
<b>Q20: What materials are most difficult to handle? Please select all that apply.</b>	Gas & Fuel Oil, Latex Paint,  Solvent Based Paints & Stains



## Local Special Waste Collections

### **Q21: Please provide your contact information:**

Name	D. Mathews
Affiliation (Company or Municipality)	City of Grosse Pointe Woods
Phone	313-343-2460
E-mail	pubwks@gpwmi.us

---

#10

**COMPLETE****Collector:** Web Link 1 (Web Link)**Started:** Tuesday, November 10, 2015 1:18:31 PM**Last Modified:** Tuesday, November 10, 2015 1:23:26 PM**Time Spent:** 00:04:55**IP Address:** 64.85.153.162

## PAGE 1

**Q1: Do you offer special waste collection options for your area (e.g. your county, municipality, and/or region)?**

Yes

Examples of special wastes include household hazardous waste, used oil, conditionally exempt small quantity generator hazardous waste, and construction and demolition waste.

## PAGE 2

**Q2: Please identify the geographic area you service (e.g. counties, municipalities, and/or regions):**

Ingham County

**Q3: Please identify what waste types you collect. Please select all that apply.**

Pharmaceuticals/Medications, Light Bulbs,  
Thermostats or other Devices containing Elemental Mercury  
,  
Sharps/Needles, Corrosive Material (Acids/Bases),  
Solvent Based Paints & Stains, Gas & Fuel Oil,  
Solvents, Pesticides, Household Cleaners,  
Propane Canisters, Fire Extinguishers,  
Lighter Fluid & Lamp Oil

**Q4: What type(s) of collection option(s) are currently offered? Please select all that apply.**

Permanent collection location(s),  
Please explain materials collected at permanent vs. one day events if both are offered:  
Tuesday and Thursday afternoon, May thru Sep. By appointment rest of year.

**Q5: For one day collections, are materials stored overnight?**

Not offered

**Q6: For permanent collections, how long are materials typically stored before shipment? Please select all that apply. Identify specific waste types in the comment field if the duration varies based on waste types collected.**

A few months

## Local Special Waste Collections

<b>Q7: Are the collection option(s) offered expected to change?</b>	Yes,  Please explain the reason prompting the change: Expanded from one day pre week to two days per week this year.
<b>Q8: How many years have the current collection options been offered?</b>	More than 5
<b>Q9: For permanent collections, approximately how many hours of collection are offered weekly, on average? Please select the most accurate option.</b>	10
<b>Q10: Are weekend collection hours offered for most materials?</b>	No
<b>Q11: Are collection options limited to warmer months (e.g. April through October or May through September)?</b>	Yes
<b>Q12: Where are collections located? Please select all that apply. Identify specific waste types in the comment field if the collection locations are limited to specific waste types(s).</b>	Other Municipal Property
<b>Q13: Is access to overnight storage locations restricted?</b>	Yes
<b>Q14: Do overnight storage locations possess containment adequate to collect spills and prevent release of the special waste constituents to a drain or the ground?</b>	Yes
<b>Q15: Please provide a brief description of how the collections identified are funded:</b>  General county funds	
<b>Q16: Are collections options offered for small business, school, municipal, church, and/or non-profit waste types? If yes, but waste types are limited, please explain which waste types are accepted from non-household locations?</b>	No
<b>Q17: If collections are offered for non-household waste, is a fee involved?</b>	<i>Respondent skipped this question</i>
<b>Q18: Are collection options offered for households outside of the county, municipality, or region providing funding for a fee?</b>	No
<b>Q19: Who operates the collection(s)?</b>	Municipal Employees
<b>Q20: What materials are most difficult to handle? Please select all that apply.</b>	<i>Respondent skipped this question</i>

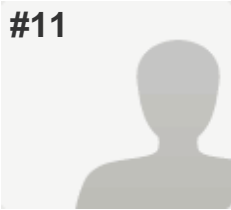
## Local Special Waste Collections

### **Q21: Please provide your contact information:**

Name	Michael Allen
Affiliation (Company or Municipality)	Ingham County Health Department
Phone	517-887-4312
E-mail	mallen@ingham.org
Special Waste Collection Website	ingham.org

---

#11



**COMPLETE**

**Collector:** Web Link 1 (Web Link)

**Started:** Tuesday, November 10, 2015 1:46:22 PM

**Last Modified:** Tuesday, November 10, 2015 1:49:35 PM

**Time Spent:** 00:03:12

**IP Address:** 50.201.176.19

PAGE 1

**Q1: Do you offer special waste collection options for your area (e.g. your county, municipality, and/or region)?**

Yes

Examples of special wastes include household hazardous waste, used oil, conditionally exempt small quantity generator hazardous waste, and construction and demolition waste.

PAGE 2

**Q2: Please identify the geographic area you service (e.g. counties, municipalities, and/or regions):**

Monroe County

**Q3: Please identify what waste types you collect. Please select all that apply.**

Pharmaceuticals/Medications,  
Electronics other than TVs or CRTs ,  
TVs and/or CRTs, Lead Acid Batteries,  
Batteries other than Lead Acid Batteries,  
Light Bulbs,  
Thermostats or other Devices containing Elemental Mercury  
,  
Sharps/Needles,  
Used Oil (Transmission Fluid, Motor Oil, Cutting Oil) ,  
Antifreeze, Corrosive Material (Acids/Bases),  
Solvent Based Paints & Stains , Latex Paints,  
Gas & Fuel Oil , Solvents, Toner, Pesticides,  
Smoke Alarms, Animal & Vegetable Oil ,  
Household Cleaners, Propane Canisters,  
Fire Extinguishers, Lighter Fluid & Lamp Oil

**Q4: What type(s) of collection option(s) are currently offered? Please select all that apply.**

One day collection location(s)

## Local Special Waste Collections

<b>Q5: For one day collections, are materials stored overnight?</b>	Yes
<b>Q6: For permanent collections, how long are materials typically stored before shipment? Please select all that apply. Identify specific waste types in the comment field if the duration varies based on waste types collected.</b>	A few months
<b>Q7: Are the collection option(s) offered expected to change?</b>	No
<b>Q8: How many years have the current collection options been offered?</b>	More than 5
<b>Q9: For permanent collections, approximately how many hours of collection are offered weekly, on average? Please select the most accurate option.</b>	Not offered
<b>Q10: Are weekend collection hours offered for most materials?</b>	No
<b>Q11: Are collection options limited to warmer months (e.g. April through October or May through September)?</b>	Yes
<b>Q12: Where are collections located? Please select all that apply. Identify specific waste types in the comment field if the collection locations are limited to specific waste types(s).</b>	School(s), Municipal Office Building(s)
<b>Q13: Is access to overnight storage locations restricted?</b>	Yes
<b>Q14: Do overnight storage locations possess containment adequate to collect spills and prevent release of the special waste constituents to a drain or the ground?</b>	Yes
<b>Q15: Please provide a brief description of how the collections identified are funded:</b>	<i>Respondent skipped this question</i>
<b>Q16: Are collections options offered for small business, school, municipal, church, and/or non-profit waste types? If yes, but waste types are limited, please explain which waste types are accepted from non-household locations?</b>	No
<b>Q17: If collections are offered for non-household waste, is a fee involved?</b>	No
<b>Q18: Are collection options offered for households outside of the county, municipality, or region providing funding for a fee?</b>	No
<b>Q19: Who operates the collection(s)?</b>	Disposal Vendor
<b>Q20: What materials are most difficult to handle? Please select all that apply.</b>	<i>Respondent skipped this question</i>

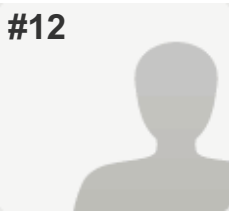
## Local Special Waste Collections

### **Q21: Please provide your contact information:**

Name	Daniel Rock
Phone	7342407909
E-mail	dan_rock@monroemi.org
Special Waste Collection Website	<a href="http://www.co.monroe.mi.us/government/departments_offices/public_health/solid_waste_management.html">http://www.co.monroe.mi.us/government/departments_offices/public_health/solid_waste_management.html</a>

---

#12



**COMPLETE**

**Collector:** Web Link 1 (Web Link)

**Started:** Tuesday, November 10, 2015 2:03:28 PM

**Last Modified:** Tuesday, November 10, 2015 2:13:50 PM

**Time Spent:** 00:10:22

**IP Address:** 207.72.49.66

PAGE 1

**Q1: Do you offer special waste collection options for your area (e.g. your county, municipality, and/or region)?**

Yes

Examples of special wastes include household hazardous waste, used oil, conditionally exempt small quantity generator hazardous waste, and construction and demolition waste.

PAGE 2

**Q2: Please identify the geographic area you service (e.g. counties, municipalities, and/or regions):**

St. Joseph County

**Q3: Please identify what waste types you collect. Please select all that apply.**

Pharmaceuticals/Medications,  
Electronics other than TVs or CRTs ,  
TVs and/or CRTs, Lead Acid Batteries,  
Batteries other than Lead Acid Batteries,  
Light Bulbs,  
Thermostats or other Devices containing Elemental Mercury  
,  
Sharps/Needles, Antifreeze,  
Corrosive Material (Acids/Bases),  
Solvent Based Paints & Stains, Latex Paints,  
Gas & Fuel Oil, Solvents,  
Appliances containing Freon, Pesticides,  
Smoke Alarms, Household Cleaners,  
Propane Canisters

**Q4: What type(s) of collection option(s) are currently offered? Please select all that apply.**

One day collection location(s),  
Please explain materials collected at permanent vs. one day events if both are offered:  
Currently offered twice a year.



## Local Special Waste Collections

<b>Q5: For one day collections, are materials stored overnight?</b>	No,  Comments: Vendors come the day of collection and take materials collected with them that day.
<b>Q6: For permanent collections, how long are materials typically stored before shipment? Please select all that apply. Identify specific waste types in the comment field if the duration varies based on waste types collected.</b>	Not offered
<b>Q7: Are the collection option(s) offered expected to change?</b>	No
<b>Q8: How many years have the current collection options been offered?</b>	More than 5
<b>Q9: For permanent collections, approximately how many hours of collection are offered weekly, on average? Please select the most accurate option.</b>	Not offered
<b>Q10: Are weekend collection hours offered for most materials?</b>	Comments: Collections held on a Saturday.
<b>Q11: Are collection options limited to warmer months (e.g. April through October or May through September)?</b>	Yes,  Please specify month(s) when collections are offered if answering yes: We generally host a collection in April and one in October.
<b>Q12: Where are collections located? Please select all that apply. Identify specific waste types in the comment field if the collection locations are limited to specific waste types(s).</b>	Other
<b>Q13: Is access to overnight storage locations restricted?</b>	Comments: N/A
<b>Q14: Do overnight storage locations possess containment adequate to collect spills and prevent release of the special waste constituents to a drain or the ground?</b>	Comments: N/A
<b>Q15: Please provide a brief description of how the collections identified are funded:</b>	
The County funds the HHW collection and the electronics is funded by a user fee plus supplemented with County funds.	
<b>Q16: Are collections options offered for small business, school, municipal, church, and/or non-profit waste types? If yes, but waste types are limited, please explain which waste types are accepted from non-household locations?</b>	Yes,  Explain which types are accepted from non-household locations: Will only accept electronics from these groups; HHW is only residential.
<b>Q17: If collections are offered for non-household waste, is a fee involved?</b>	Comments: N/A

## Local Special Waste Collections

**Q18: Are collection options offered for households outside of the county, municipality, or region providing funding for a fee?**

No

**Q19: Who operates the collection(s)?**

Disposal Vendor,  
Comments: Plus volunteers.

**Q20: What materials are most difficult to handle? Please select all that apply.**

TVs and/or CRTs

**Q21: Please provide your contact information:**

Name

Pat Kulikowski

Affiliation (Company or Municipality)

St. Joseph County

Phone

269-467-5617

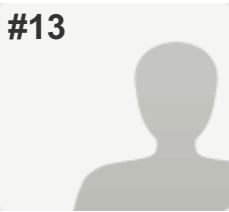
E-mail

kulikowskip@stjosephcountymi.org

Special Waste Collection Website

listed on County's website but only near the collection date.

#13



**COMPLETE**

**Collector:** Web Link 1 (Web Link)

**Started:** Tuesday, November 10, 2015 3:14:01 PM

**Last Modified:** Tuesday, November 10, 2015 3:19:30 PM

**Time Spent:** 00:05:28

**IP Address:** 70.194.25.109

PAGE 1

**Q1: Do you offer special waste collection options for your area (e.g. your county, municipality, and/or region)?**

Yes

Examples of special wastes include household hazardous waste, used oil, conditionally exempt small quantity generator hazardous waste, and construction and demolition waste.

PAGE 2

**Q2: Please identify the geographic area you service (e.g. counties, municipalities, and/or regions):**

Roscommon County

**Q3: Please identify what waste types you collect. Please select all that apply.**

Pharmaceuticals/Medications,  
Electronics other than TVs or CRTs ,  
TVs and/or CRTs, Lead Acid Batteries,  
Batteries other than Lead Acid Batteries,  
Light Bulbs,  
Thermostats or other Devices containing Elemental Mercury  
,  
Sharps/Needles,  
Used Oil (Transmission Fluid, Motor Oil, Cutting Oil) ,  
Antifreeze, Corrosive Material (Acids/Bases),  
Solvent Based Paints & Stains , Latex Paints,  
Gas & Fuel Oil , Solvents, Toner, Pesticides,  
Asbestos, Smoke Alarms, Animal & Vegetable Oil,  
Household Cleaners, Fire Extinguishers,  
Lighter Fluid & Lamp Oil

**Q4: What type(s) of collection option(s) are currently offered? Please select all that apply.**

One day collection location(s)

## Local Special Waste Collections

<b>Q5: For one day collections, are materials stored overnight?</b>	No
<b>Q6: For permanent collections, how long are materials typically stored before shipment? Please select all that apply. Identify specific waste types in the comment field if the duration varies based on waste types collected.</b>	<i>Respondent skipped this question</i>
<b>Q7: Are the collection option(s) offered expected to change?</b>	No
<b>Q8: How many years have the current collection options been offered?</b>	More than 5
<b>Q9: For permanent collections, approximately how many hours of collection are offered weekly, on average? Please select the most accurate option.</b>	<i>Respondent skipped this question</i>
<b>Q10: Are weekend collection hours offered for most materials?</b>	Yes
<b>Q11: Are collection options limited to warmer months (e.g. April through October or May through September)?</b>	Yes, Please specify month(s) when collections are offered if answering yes: May/June & Sept.
<b>Q12: Where are collections located? Please select all that apply. Identify specific waste types in the comment field if the collection locations are limited to specific waste types(s).</b>	Municipal Maintenance Building(s)
<b>Q13: Is access to overnight storage locations restricted?</b>	Yes
<b>Q14: Do overnight storage locations possess containment adequate to collect spills and prevent release of the special waste constituents to a drain or the ground?</b>	Yes
<b>Q15: Please provide a brief description of how the collections identified are funded:</b>  Township garbage funds	
<b>Q16: Are collections options offered for small business, school, municipal, church, and/or non-profit waste types? If yes, but waste types are limited, please explain which waste types are accepted from non-household locations?</b>	Yes
<b>Q17: If collections are offered for non-household waste, is a fee involved?</b>	No
<b>Q18: Are collection options offered for households outside of the county, municipality, or region providing funding for a fee?</b>	No
<b>Q19: Who operates the collection(s)?</b>	Disposal Vendor

## Local Special Waste Collections

**Q20: What materials are most difficult to handle?**  
**Please select all that apply.**

TVs and/or CRTs, Drywall, Shingles,  
Appliances containing Freon, Propane Canisters

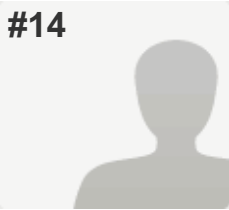
---

**Q21: Please provide your contact information:**

Name	Barb Stauffer
Affiliation (Company or Municipality)	Conservation District/Recycling
Phone	989-275-3163
E-mail	barb.stauffer@macd.org

---

#14

**COMPLETE****Collector:** Web Link 1 (Web Link)**Started:** Tuesday, November 10, 2015 11:10:37 PM**Last Modified:** Tuesday, November 10, 2015 11:20:35 PM**Time Spent:** 00:09:57**IP Address:** 97.92.124.181

## PAGE 1

**Q1: Do you offer special waste collection options for your area (e.g. your county, municipality, and/or region)?**

Yes

Examples of special wastes include household hazardous waste, used oil, conditionally exempt small quantity generator hazardous waste, and construction and demolition waste.

## PAGE 2

**Q2: Please identify the geographic area you service (e.g. counties, municipalities, and/or regions):**

Gogebic Range Solid Waste Management Authority

**Q3: Please identify what waste types you collect. Please select all that apply.**

Batteries other than Lead Acid Batteries ,

Thermostats or other Devices containing Elemental Mercury

,

Used Oil (Transmission Fluid, Motor Oil, Cutting Oil)

**Q4: What type(s) of collection option(s) are currently offered? Please select all that apply.**

Permanent collection location(s),

Please explain materials collected at permanent vs. one day events if both are offered:

Batteries, thermostats, and used oil are accepted at our transfer station facility during regular business hours during the week and on Saturday morning.

**Q5: For one day collections, are materials stored overnight?**

*Respondent skipped this question*

**Q6: For permanent collections, how long are materials typically stored before shipment? Please select all that apply. Identify specific waste types in the comment field if the duration varies based on waste types collected.**

A few weeks

**Q7: Are the collection option(s) offered expected to change?**

No

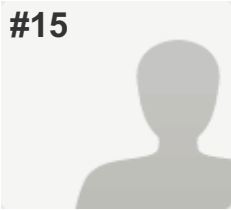
**Q8: How many years have the current collection options been offered?**

More than 5

## Local Special Waste Collections

<b>Q9: For permanent collections, approximately how many hours of collection are offered weekly, on average?</b> Please select the most accurate option.	40
<b>Q10: Are weekend collection hours offered for most materials?</b>	Yes
<b>Q11: Are collection options limited to warmer months (e.g. April through October or May through September)?</b>	No
<b>Q12: Where are collections located? Please select all that apply. Identify specific waste types in the comment field if the collection locations are limited to specific waste types(s).</b>	Other Municipal Property
<b>Q13: Is access to overnight storage locations restricted?</b>	Yes
<b>Q14: Do overnight storage locations possess containment adequate to collect spills and prevent release of the special waste constituents to a drain or the ground?</b>	Yes
<b>Q15: Please provide a brief description of how the collections identified are funded:</b> No funds are needed to fund the collection.	
<b>Q16: Are collections options offered for small business, school, municipal, church, and/or non-profit waste types? If yes, but waste types are limited, please explain which waste types are accepted from non-household locations?</b>	Yes
<b>Q17: If collections are offered for non-household waste, is a fee involved?</b>	No
<b>Q18: Are collection options offered for households outside of the county, municipality, or region providing funding for a fee?</b>	No
<b>Q19: Who operates the collection(s)?</b>	Location Hosting Collection
<b>Q20: What materials are most difficult to handle? Please select all that apply.</b>	Batteries other than Lead Acid Batteries
<b>Q21: Please provide your contact information:</b>	
Name	Chris Ann Bressette
Affiliation (Company or Municipality)	Gogebic Range Solid Waste Management Authority
Phone	906-932-0600
E-mail	chrisann@chartermi.net

#15



**COMPLETE**

**Collector:** Web Link 1 (Web Link)

**Started:** Wednesday, November 11, 2015 2:51:35 PM

**Last Modified:** Wednesday, November 11, 2015 3:06:51 PM

**Time Spent:** 00:15:16

**IP Address:** 12.47.83.14

PAGE 1

**Q1: Do you offer special waste collection options for your area (e.g. your county, municipality, and/or region)?**

Yes

Examples of special wastes include household hazardous waste, used oil, conditionally exempt small quantity generator hazardous waste, and construction and demolition waste.

PAGE 2

**Q2: Please identify the geographic area you service (e.g. counties, municipalities, and/or regions):**

St Clair County residents

**Q3: Please identify what waste types you collect. Please select all that apply.**

Electronics other than TVs or CRTs ,  
TVs and/or CRTs, Drywall, Shingles, Pallets,  
Lead Acid Batteries,  
Batteries other than Lead Acid Batteries,  
Light Bulbs,  
Thermostats or other Devices containing Elemental Mercury  
,  
Antifreeze, Corrosive Material (Acids/Bases),  
Solvent Based Paints & Stains, Gas & Fuel Oil ,  
Solvents, Toner, Appliances containing Freon,  
Pesticides, Asbestos, Household Cleaners,  
Propane Canisters, Lighter Fluid & Lamp Oil

**Q4: What type(s) of collection option(s) are currently offered? Please select all that apply.**

Permanent collection location(s)

**Q5: For one day collections, are materials stored overnight?**

Not offered



## Local Special Waste Collections

<b>Q6: For permanent collections, how long are materials typically stored before shipment? Please select all that apply. Identify specific waste types in the comment field if the duration varies based on waste types collected.</b>	A few months , Waste types and/or other comments: We have our household hazardous waste shed emptied about 2-3 times a year.
<b>Q7: Are the collection option(s) offered expected to change?</b>	No
<b>Q8: How many years have the current collection options been offered?</b>	More than 5
<b>Q9: For permanent collections, approximately how many hours of collection are offered weekly, on average? Please select the most accurate option.</b>	20, Comments: We ask that the residents make appointment.
<b>Q10: Are weekend collection hours offered for most materials?</b>	Yes, Comments: We have limited staff on Saturdays. We try to schedule during the week.
<b>Q11: Are collection options limited to warmer months (e.g. April through October or May through September)?</b>	No
<b>Q12: Where are collections located? Please select all that apply. Identify specific waste types in the comment field if the collection locations are limited to specific waste types(s).</b>	Landfill(s), Other, Waste type(s) and/or other comments: Fire station
<b>Q13: Is access to overnight storage locations restricted?</b>	Yes
<b>Q14: Do overnight storage locations possess containment adequate to collect spills and prevent release of the special waste constituents to a drain or the ground?</b>	Yes
<b>Q15: Please provide a brief description of how the collections identified are funded:</b> At this time HHW is funded by tipping fees from the landfill.	
<b>Q16: Are collections options offered for small business, school, municipal, church, and/or non-profit waste types? If yes, but waste types are limited, please explain which waste types are accepted from non-household locations?</b>	No
<b>Q17: If collections are offered for non-household waste, is a fee involved?</b>	<i>Respondent skipped this question</i>
<b>Q18: Are collection options offered for households outside of the county, municipality, or region providing funding for a fee?</b>	No
<b>Q19: Who operates the collection(s)?</b>	Municipal Employees

## Local Special Waste Collections

**Q20: What materials are most difficult to handle?**  
**Please select all that apply.**

Latex Paint, Smoke Alarms,  
Animal & Vegetable Oil, Propane Canisters,  
Fire Extinguishers,  
Please explain the difficulties:  
We have problems finding vendor to take them from  
us.

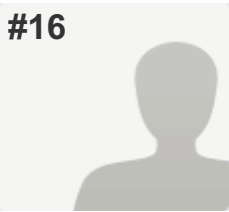
---

**Q21: Please provide your contact information:**

Name	Barbara Barnes
Affiliation (Company or Municipality)	St. Clair County
Phone	810-989-6981
E-mail	bbarnes@stclaircounty.org

---

#16



**COMPLETE**

**Collector:** Web Link 1 (Web Link)

**Started:** Thursday, November 12, 2015 8:41:26 AM

**Last Modified:** Thursday, November 12, 2015 8:51:32 AM

**Time Spent:** 00:10:05

**IP Address:** 69.2.21.12

PAGE 1

**Q1: Do you offer special waste collection options for your area (e.g. your county, municipality, and/or region)?**

Yes

Examples of special wastes include household hazardous waste, used oil, conditionally exempt small quantity generator hazardous waste, and construction and demolition waste.

PAGE 2

**Q2: Please identify the geographic area you service (e.g. counties, municipalities, and/or regions):**

Eaton County

**Q3: Please identify what waste types you collect. Please select all that apply.**

Pharmaceuticals/Medications,  
Electronics other than TVs or CRTs ,  
TVs and/or CRTs, Lead Acid Batteries,  
Batteries other than Lead Acid Batteries,  
Light Bulbs,  
Thermostats or other Devices containing Elemental Mercury  
,  
Sharps/Needles,  
Used Oil (Transmission Fluid, Motor Oil, Cutting Oil) ,  
Antifreeze, Corrosive Material (Acids/Bases),  
Solvent Based Paints & Stains , Latex Paints,  
Gas & Fuel Oil , Solvents, Toner,  
Appliances containing Freon, Pesticides, Asbestos,  
Smoke Alarms, Household Cleaners,  
Fire Extinguishers, Lighter Fluid & Lamp Oil

**Q4: What type(s) of collection option(s) are currently offered? Please select all that apply.**

One day collection location(s)

## Local Special Waste Collections

<b>Q5: For one day collections, are materials stored overnight?</b>	No,  Comments: There are a few exceptions. Batteries are collected year round and stored until we have 8 full 55-gallon drums. If we have an overflow of electronics from an event, they have been allowed to leave electronics on site to pick up Monday morning.
<b>Q6: For permanent collections, how long are materials typically stored before shipment? Please select all that apply. Identify specific waste types in the comment field if the duration varies based on waste types collected.</b>	Not offered,  Waste types and/or other comments: Batteries are usually shipped every 3 months.
<b>Q7: Are the collection option(s) offered expected to change?</b>	No
<b>Q8: How many years have the current collection options been offered?</b>	More than 5
<b>Q9: For permanent collections, approximately how many hours of collection are offered weekly, on average? Please select the most accurate option.</b>	Not offered
<b>Q10: Are weekend collection hours offered for most materials?</b>	Yes,  Comments: All of our 1-day events take place on Saturdays
<b>Q11: Are collection options limited to warmer months (e.g. April through October or May through September)?</b>	Yes,  Please specify month(s) when collections are offered if answering yes: Our 1-day events are May, July, and August
<b>Q12: Where are collections located? Please select all that apply. Identify specific waste types in the comment field if the collection locations are limited to specific waste types(s).</b>	Municipal Maintenance Building(s),  Police Department(s), Local Pharmacy,  Waste type(s) and/or other comments: Police Dept: Narcotics Pharmacies (3): Non-controlled substances Maintenance Buildings: Our 1-day events
<b>Q13: Is access to overnight storage locations restricted?</b>	Yes
<b>Q14: Do overnight storage locations possess containment adequate to collect spills and prevent release of the special waste constituents to a drain or the ground?</b>	<i>Respondent skipped this question</i>
<b>Q15: Please provide a brief description of how the collections identified are funded:</b>	
Through our Solid Waste Ordinance Surcharge. Any home with trash pickup is charged \$.60/month. Commercial accounts are charged \$.30/cubic yard for loose or \$.90/cubic yard for compacted material (max of \$20/month/container).	

## Local Special Waste Collections

**Q16: Are collections options offered for small business, school, municipal, church, and/or non-profit waste types? If yes, but waste types are limited, please explain which waste types are accepted from non-household locations?**

*Respondent skipped this question*

**Q17: If collections are offered for non-household waste, is a fee involved?**

No,

Comments:

The only fee we have is IF the person brings more than 10 1-gallon cans of paint. The first 10 are free, beyond that it's \$1/can.

**Q18: Are collection options offered for households outside of the county, municipality, or region providing funding for a fee?**

No

**Q19: Who operates the collection(s)?**

Disposal Vendor, Municipal Employees,

Comments:

Disposal vendors, Resource Recovery Department, volunteers, and we hire the jail crew to unload the tires.

**Q20: What materials are most difficult to handle? Please select all that apply.**

Pharmaceuticals/Medications, TVs and/or CRTs,

Batteries other than Lead Acid Batteries,

Latex Paint,

Please explain the difficulties:

Batteries because we have to sort them and tape them. Latex paint because it's usually at least half of the volume we receive at our events. CRTs because no one else takes them for free so we get TONS of them and they're heavy. Meds because people ALWAYS put non-controlled substances in our controlled substance lock bins at the police departments.

**Q21: Please provide your contact information:**

Name

Mary Roe

Affiliation (Company or Municipality)

Eaton County

Phone

517 543 3686

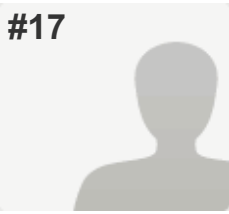
E-mail

mbroe@eatoncounty.org

Special Waste Collection Website

www.eatoncounty.org/recycling

#17

**COMPLETE****Collector:** Web Link 1 (Web Link)**Started:** Thursday, November 12, 2015 9:12:00 AM**Last Modified:** Thursday, November 12, 2015 9:16:52 AM**Time Spent:** 00:04:51**IP Address:** 68.48.227.3

## PAGE 1

**Q1: Do you offer special waste collection options for your area (e.g. your county, municipality, and/or region)?**

**Examples of special wastes include household hazardous waste, used oil, conditionally exempt small quantity generator hazardous waste, and construction and demolition waste.**

No,

If "no" please identify sponsors of special waste collections options in your area.

Wayne County Department of Public Services

## PAGE 2

**Q2: Please identify the geographic area you service (e.g. counties, municipalities, and/or regions):**

*Respondent skipped this question*

**Q3: Please identify what waste types you collect. Please select all that apply.**

*Respondent skipped this question*

**Q4: What type(s) of collection option(s) are currently offered? Please select all that apply.**

*Respondent skipped this question*

**Q5: For one day collections, are materials stored overnight?**

*Respondent skipped this question*

**Q6: For permanent collections, how long are materials typically stored before shipment? Please select all that apply. Identify specific waste types in the comment field if the duration varies based on waste types collected.**

*Respondent skipped this question*

**Q7: Are the collection option(s) offered expected to change?**

*Respondent skipped this question*

**Q8: How many years have the current collection options been offered?**

*Respondent skipped this question*

**Q9: For permanent collections, approximately how many hours of collection are offered weekly, on average? Please select the most accurate option.**

*Respondent skipped this question*

**Q10: Are weekend collection hours offered for most materials?**

*Respondent skipped this question*

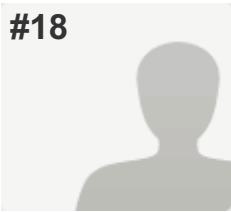
**Q11: Are collection options limited to warmer months (e.g. April through October or May through September)?**

*Respondent skipped this question*

## Local Special Waste Collections

<b>Q12: Where are collections located? Please select all that apply. Identify specific waste types in the comment field if the collection locations are limited to specific waste types(s).</b>	<i>Respondent skipped this question</i>
<b>Q13: Is access to overnight storage locations restricted?</b>	<i>Respondent skipped this question</i>
<b>Q14: Do overnight storage locations possess containment adequate to collect spills and prevent release of the special waste constituents to a drain or the ground?</b>	<i>Respondent skipped this question</i>
<b>Q15: Please provide a brief description of how the collections identified are funded:</b>	<i>Respondent skipped this question</i>
<b>Q16: Are collections options offered for small business, school, municipal, church, and/or non-profit waste types? If yes, but waste types are limited, please explain which waste types are accepted from non-household locations?</b>	<i>Respondent skipped this question</i>
<b>Q17: If collections are offered for non-household waste, is a fee involved?</b>	<i>Respondent skipped this question</i>
<b>Q18: Are collection options offered for households outside of the county, municipality, or region providing funding for a fee?</b>	<i>Respondent skipped this question</i>
<b>Q19: Who operates the collection(s)?</b>	<i>Respondent skipped this question</i>
<b>Q20: What materials are most difficult to handle? Please select all that apply.</b>	<i>Respondent skipped this question</i>
<b>Q21: Please provide your contact information:</b>	
Name	Matthew Sype
Affiliation (Company or Municipality)	City of Flat Rock
Phone	734-782-2470
E-mail	dps@flatrockmi.org

#18



**COMPLETE**

**Collector:** Web Link 1 (Web Link)

**Started:** Tuesday, November 10, 2015 3:14:21 PM

**Last Modified:** Thursday, November 12, 2015 11:02:00 AM

**Time Spent:** Over a day

**IP Address:** 199.102.68.90

PAGE 1

**Q1: Do you offer special waste collection options for your area (e.g. your county, municipality, and/or region)?**

Examples of special wastes include household hazardous waste, used oil, conditionally exempt small quantity generator hazardous waste, and construction and demolition waste.

*Respondent skipped this question*

PAGE 2

**Q2: Please identify the geographic area you service (e.g. counties, municipalities, and/or regions):**

Macomb County

**Q3: Please identify what waste types you collect. Please select all that apply.**

Pharmaceuticals/Medications,  
Electronics other than TVs or CRTs ,  
TVs and/or CRTs, Light Bulbs,  
Thermostats or other Devices containing Elemental Mercury  
,  
Used Oil (Transmission Fluid, Motor Oil, Cutting Oil) ,  
Antifreeze, Corrosive Material (Acids/Bases),  
Solvent Based Paints & Stains, Gas & Fuel Oil ,  
Solvents, Pesticides, Household Cleaners,  
Fire Extinguishers, Lighter Fluid & Lamp Oil

**Q4: What type(s) of collection option(s) are currently offered? Please select all that apply.**

Permanent collection location(s)

**Q5: For one day collections, are materials stored overnight?**

Yes

**Q6: For permanent collections, how long are materials typically stored before shipment? Please select all that apply. Identify specific waste types in the comment field if the duration varies based on waste types collected.**

A few weeks



## Local Special Waste Collections

<b>Q7: Are the collection option(s) offered expected to change?</b>	No
<b>Q8: How many years have the current collection options been offered?</b>	More than 5, Comments: over 26 yeares
<b>Q9: For permanent collections, approximately how many hours of collection are offered weekly, on average? Please select the most accurate option.</b>	Not offered, Comments: We offer monthly collections that last 4-5 hours
<b>Q10: Are weekend collection hours offered for most materials?</b>	No
<b>Q11: Are collection options limited to warmer months (e.g. April through October or May through September)?</b>	Yes, Please specify month(s) when collections are offered if answering yes: April - Oct.
<b>Q12: Where are collections located? Please select all that apply. Identify specific waste types in the comment field if the collection locations are limited to specific waste types(s).</b>	Other Municipal Property
<b>Q13: Is access to overnight storage locations restricted?</b>	Yes
<b>Q14: Do overnight storage locations possess containment adequate to collect spills and prevent release of the special waste constituents to a drain or the ground?</b>	Yes
<b>Q15: Please provide a brief description of how the collections identified are funded:</b> County funds and MDARD	
<b>Q16: Are collections options offered for small business, school, municipal, church, and/or non-profit waste types? If yes, but waste types are limited, please explain which waste types are accepted from non-household locations?</b>	No
<b>Q17: If collections are offered for non-household waste, is a fee involved?</b>	No
<b>Q18: Are collection options offered for households outside of the county, municipality, or region providing funding for a fee?</b>	No
<b>Q19: Who operates the collection(s)?</b>	Municipal Employees
<b>Q20: What materials are most difficult to handle? Please select all that apply.</b>	TVs and/or CRTs

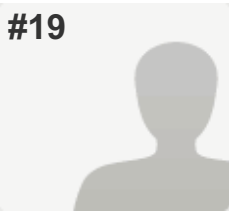
## Local Special Waste Collections

### **Q21: Please provide your contact information:**

Name	Stephen Lichota
Affiliation (Company or Municipality)	Macomb County Health Dept.
Phone	586-469-5236
E-mail	Steve.Lichota@macombgov.org
Special Waste Collection Website	<a href="http://health.macombgov.org/Health-Programs-EnvironmentalHealth-RiskAssessment-HouseholdWaste">http://health.macombgov.org/Health-Programs-EnvironmentalHealth-RiskAssessment-HouseholdWaste</a>

---

#19



**COMPLETE**

**Collector:** Web Link 1 (Web Link)

**Started:** Monday, November 16, 2015 9:14:18 AM

**Last Modified:** Monday, November 16, 2015 9:18:57 AM

**Time Spent:** 00:04:38

**IP Address:** 24.172.190.98

PAGE 1

**Q1: Do you offer special waste collection options for your area (e.g. your county, municipality, and/or region)?**

Yes

Examples of special wastes include household hazardous waste, used oil, conditionally exempt small quantity generator hazardous waste, and construction and demolition waste.

PAGE 2

**Q2: Please identify the geographic area you service (e.g. counties, municipalities, and/or regions):**

Livonia, Northville & Northville Twp

**Q3: Please identify what waste types you collect. Please select all that apply.**

Pharmaceuticals/Medications,  
Electronics other than TVs or CRTs ,  
TVs and/or CRTs, Lead Acid Batteries,  
Batteries other than Lead Acid Batteries,  
Light Bulbs,  
Thermostats or other Devices containing Elemental Mercury  
,  
Sharps/Needles,  
Used Oil (Transmission Fluid, Motor Oil, Cutting Oil) ,  
Antifreeze, Corrosive Material (Acids/Bases),  
Solvent Based Paints & Stains , Latex Paints,  
Gas & Fuel Oil , Solvents, Toner, Pesticides,  
Asbestos, Smoke Alarms, Household Cleaners,  
Propane Canisters, Fire Extinguishers,  
Lighter Fluid & Lamp Oil

**Q4: What type(s) of collection option(s) are currently offered? Please select all that apply.**

One day collection location(s)

## Local Special Waste Collections

<b>Q5: For one day collections, are materials stored overnight?</b>	No
<b>Q6: For permanent collections, how long are materials typically stored before shipment? Please select all that apply. Identify specific waste types in the comment field if the duration varies based on waste types collected.</b>	Not offered
<b>Q7: Are the collection option(s) offered expected to change?</b>	No
<b>Q8: How many years have the current collection options been offered?</b>	More than 5
<b>Q9: For permanent collections, approximately how many hours of collection are offered weekly, on average? Please select the most accurate option.</b>	Not offered
<b>Q10: Are weekend collection hours offered for most materials?</b>	Yes
<b>Q11: Are collection options limited to warmer months (e.g. April through October or May through September)?</b>	Yes
<b>Q12: Where are collections located? Please select all that apply. Identify specific waste types in the comment field if the collection locations are limited to specific waste types(s).</b>	Other Municipal Property
<b>Q13: Is access to overnight storage locations restricted?</b>	<i>Respondent skipped this question</i>
<b>Q14: Do overnight storage locations possess containment adequate to collect spills and prevent release of the special waste constituents to a drain or the ground?</b>	<i>Respondent skipped this question</i>
<b>Q15: Please provide a brief description of how the collections identified are funded:</b> Recycle Millage	
<b>Q16: Are collections options offered for small business, school, municipal, church, and/or non-profit waste types? If yes, but waste types are limited, please explain which waste types are accepted from non-household locations?</b>	No
<b>Q17: If collections are offered for non-household waste, is a fee involved?</b>	<i>Respondent skipped this question</i>
<b>Q18: Are collection options offered for households outside of the county, municipality, or region providing funding for a fee?</b>	No
<b>Q19: Who operates the collection(s)?</b>	Disposal Vendor, Municipal Employees
<b>Q20: What materials are most difficult to handle? Please select all that apply.</b>	TVs and/or CRTs

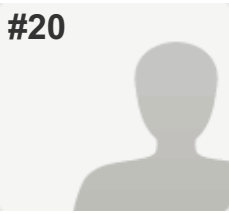
## Local Special Waste Collections

### **Q21: Please provide your contact information:**

Name	Brian Wilson
Affiliation (Company or Municipality)	City of Livonia
Phone	7344662614
E-mail	bwilson@ci.livonia.mi.us

---

#20



**COMPLETE**

**Collector:** Web Link 1 (Web Link)

**Started:** Tuesday, November 17, 2015 9:44:09 AM

**Last Modified:** Tuesday, November 17, 2015 10:15:57 AM

**Time Spent:** 00:31:48

**IP Address:** 199.150.130.73

PAGE 1

**Q1: Do you offer special waste collection options for your area (e.g. your county, municipality, and/or region)?**

Yes

Examples of special wastes include household hazardous waste, used oil, conditionally exempt small quantity generator hazardous waste, and construction and demolition waste.

PAGE 2

**Q2: Please identify the geographic area you service (e.g. counties, municipalities, and/or regions):**

Jackson County

**Q3: Please identify what waste types you collect. Please select all that apply.**

Pharmaceuticals/Medications,  
Electronics other than TVs or CRTs ,  
TVs and/or CRTs, Lead Acid Batteries,  
Batteries other than Lead Acid Batteries,  
Light Bulbs,  
Thermostats or other Devices containing Elemental Mercury  
,  
Sharps/Needles,  
Used Oil (Transmission Fluid, Motor Oil, Cutting Oil) ,  
Antifreeze, Corrosive Material (Acids/Bases),  
Solvent Based Paints & Stains , Latex Paints,  
Gas & Fuel Oil , Solvents, Pesticides,  
Smoke Alarms, Household Cleaners,  
Propane Canisters

**Q4: What type(s) of collection option(s) are currently offered? Please select all that apply.**

One day collection location(s)

**Q5: For one day collections, are materials stored overnight?**

No

## Local Special Waste Collections

<b>Q6: For permanent collections, how long are materials typically stored before shipment? Please select all that apply. Identify specific waste types in the comment field if the duration varies based on waste types collected.</b>	Not offered
<b>Q7: Are the collection option(s) offered expected to change?</b>	No
<b>Q8: How many years have the current collection options been offered?</b>	1,  Comments: 2015 was the first year that we have ran the event. There have been other events prior, but I'm not sure when.
<b>Q9: For permanent collections, approximately how many hours of collection are offered weekly, on average? Please select the most accurate option.</b>	<i>Respondent skipped this question</i>
<b>Q10: Are weekend collection hours offered for most materials?</b>	No
<b>Q11: Are collection options limited to warmer months (e.g. April through October or May through September)?</b>	Yes,  Please specify month(s) when collections are offered if answering yes: our HHW event is offered in September
<b>Q12: Where are collections located? Please select all that apply. Identify specific waste types in the comment field if the collection locations are limited to specific waste types(s).</b>	Other,  Waste type(s) and/or other comments: Our last HHW event was in the parking lot of our County Fairgrounds. Previously they were held in the lot of the Jackson County Health Dept.
<b>Q13: Is access to overnight storage locations restricted?</b>	Yes
<b>Q14: Do overnight storage locations possess containment adequate to collect spills and prevent release of the special waste constituents to a drain or the ground?</b>	<i>Respondent skipped this question</i>
<b>Q15: Please provide a brief description of how the collections identified are funded:</b>  HHW funded by the County Commission	
<b>Q16: Are collections options offered for small business, school, municipal, church, and/or non-profit waste types? If yes, but waste types are limited, please explain which waste types are accepted from non-household locations?</b>	No
<b>Q17: If collections are offered for non-household waste, is a fee involved?</b>	<i>Respondent skipped this question</i>
<b>Q18: Are collection options offered for households outside of the county, municipality, or region providing funding for a fee?</b>	No

## Local Special Waste Collections

**Q19: Who operates the collection(s)?**

Disposal Vendor

**Q20: What materials are most difficult to handle?**  
**Please select all that apply.**

Please explain the difficulties:  
We don't handle any of the products, we only facilitate the event.

**Q21: Please provide your contact information:**

Name

Lori Fitzgibbons

Affiliation (Company or Municipality)

Jackson County Conservation District

Phone

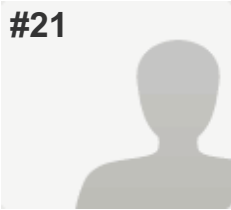
517-784-2800 x214

E-mail

lori.fitzgibbons@mi.nacdnet.net



#21

**COMPLETE****Collector:** Web Link 1 (Web Link)**Started:** Wednesday, November 18, 2015 12:05:07 PM**Last Modified:** Wednesday, November 18, 2015 12:22:13 PM**Time Spent:** 00:17:06**IP Address:** 162.239.53.82

## PAGE 1

**Q1: Do you offer special waste collection options for your area (e.g. your county, municipality, and/or region)?**

Yes

Examples of special wastes include household hazardous waste, used oil, conditionally exempt small quantity generator hazardous waste, and construction and demolition waste.

## PAGE 2

**Q2: Please identify the geographic area you service (e.g. counties, municipalities, and/or regions):**

*Respondent skipped this question*

**Q3: Please identify what waste types you collect. Please select all that apply.**

Lead Acid Batteries,  
Batteries other than Lead Acid Batteries ,  
Used Oil (Transmission Fluid, Motor Oil, Cutting Oil) ,  
Corrosive Material (Acids/Bases),  
Solvent Based Paints & Stains , Solvents, Toner,  
Pesticides, Household Cleaners,  
Comments: Mostly household hazardous wastes

**Q4: What type(s) of collection option(s) are currently offered? Please select all that apply.**

One day collection location(s),  
Please explain materials collected at permanent vs. one day events if both are offered:  
we only offer one day collection at a main location  
this is always the second Saturday in October of every year.

**Q5: For one day collections, are materials stored overnight?**

No

**Q6: For permanent collections, how long are materials typically stored before shipment? Please select all that apply. Identify specific waste types in the comment field if the duration varies based on waste types collected.**

Not offered

**Q7: Are the collection option(s) offered expected to change?**

No

## Local Special Waste Collections

<b>Q8: How many years have the current collection options been offered?</b>	More than 5
<b>Q9: For permanent collections, approximately how many hours of collection are offered weekly, on average? Please select the most accurate option.</b>	Not offered
<b>Q10: Are weekend collection hours offered for most materials?</b>	Yes
<b>Q11: Are collection options limited to warmer months (e.g. April through October or May through September)?</b>	Yes
<b>Q12: Where are collections located? Please select all that apply. Identify specific waste types in the comment field if the collection locations are limited to specific waste types(s).</b>	Other, Waste type(s) and/or other comments: MSU Extension Office in Baldwin, MI
<b>Q13: Is access to overnight storage locations restricted?</b>	Yes
<b>Q14: Do overnight storage locations possess containment adequate to collect spills and prevent release of the special waste constituents to a drain or the ground?</b>	Comments: N//A
<b>Q15: Please provide a brief description of how the collections identified are funded:</b> multiple funding, donations, county and twps, foundations, we seek money wherever we can.	
<b>Q16: Are collections options offered for small business, school, municipal, church, and/or non-profit waste types? If yes, but waste types are limited, please explain which waste types are accepted from non-household locations?</b>	Yes
<b>Q17: If collections are offered for non-household waste, is a fee involved?</b>	No
<b>Q18: Are collection options offered for households outside of the county, municipality, or region providing funding for a fee?</b>	Comments: yes, however we don't advertise and we don't charge but we do ask for a donation.
<b>Q19: Who operates the collection(s)?</b>	Comments: other. its a multi-volunteer group that gets together to collect
<b>Q20: What materials are most difficult to handle? Please select all that apply.</b>	Lead Acid Batteries,  Batteries other than Lead Acid Batteries ,  Please explain the difficulties: we store all year round for this event and sometimes run out of space.

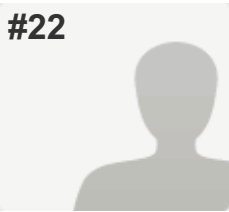
## Local Special Waste Collections

**Q21: Please provide your contact information:**

Name	Tamara Applewhite
Affiliation (Company or Municipality)	MSU Extension Lake County
Phone	9894009167
E-mail	tapplewh@anr.msu.edu
Special Waste Collection Website	it's on the conservation districts website

---

#22



**COMPLETE**

**Collector:** Web Link 1 (Web Link)

**Started:** Wednesday, November 18, 2015 12:54:36 PM

**Last Modified:** Wednesday, November 18, 2015 12:58:38 PM

**Time Spent:** 00:04:01

**IP Address:** 65.111.213.162

PAGE 1

**Q1: Do you offer special waste collection options for your area (e.g. your county, municipality, and/or region)?**

Yes

Examples of special wastes include household hazardous waste, used oil, conditionally exempt small quantity generator hazardous waste, and construction and demolition waste.

PAGE 2

**Q2: Please identify the geographic area you service (e.g. counties, municipalities, and/or regions):**

Roscommon County

**Q3: Please identify what waste types you collect. Please select all that apply.**

Pharmaceuticals/Medications,  
Electronics other than TVs or CRTs ,  
TVs and/or CRTs, Lead Acid Batteries,  
Batteries other than Lead Acid Batteries,  
Light Bulbs,  
Thermostats or other Devices containing Elemental Mercury  
,  
Sharps/Needles,  
Used Oil (Transmission Fluid, Motor Oil, Cutting Oil) ,  
Antifreeze, Corrosive Material (Acids/Bases),  
Solvent Based Paints & Stains , Latex Paints,  
Gas & Fuel Oil , Solvents, Toner, Pesticides,  
Asbestos, Smoke Alarms, Animal & Vegetable Oil,  
Household Cleaners, Fire Extinguishers,  
Lighter Fluid & Lamp Oil

**Q4: What type(s) of collection option(s) are currently offered? Please select all that apply.**

One day collection location(s)

## Local Special Waste Collections

<b>Q5: For one day collections, are materials stored overnight?</b>	No
<b>Q6: For permanent collections, how long are materials typically stored before shipment? Please select all that apply. Identify specific waste types in the comment field if the duration varies based on waste types collected.</b>	<i>Respondent skipped this question</i>
<b>Q7: Are the collection option(s) offered expected to change?</b>	No
<b>Q8: How many years have the current collection options been offered?</b>	More than 5
<b>Q9: For permanent collections, approximately how many hours of collection are offered weekly, on average? Please select the most accurate option.</b>	<i>Respondent skipped this question</i>
<b>Q10: Are weekend collection hours offered for most materials?</b>	Yes
<b>Q11: Are collection options limited to warmer months (e.g. April through October or May through September)?</b>	Yes
<b>Q12: Where are collections located? Please select all that apply. Identify specific waste types in the comment field if the collection locations are limited to specific waste types(s).</b>	Municipal Maintenance Building(s)
<b>Q13: Is access to overnight storage locations restricted?</b>	Yes
<b>Q14: Do overnight storage locations possess containment adequate to collect spills and prevent release of the special waste constituents to a drain or the ground?</b>	Yes
<b>Q15: Please provide a brief description of how the collections identified are funded:</b> township garbage funds	
<b>Q16: Are collections options offered for small business, school, municipal, church, and/or non-profit waste types? If yes, but waste types are limited, please explain which waste types are accepted from non-household locations?</b>	No
<b>Q17: If collections are offered for non-household waste, is a fee involved?</b>	<i>Respondent skipped this question</i>
<b>Q18: Are collection options offered for households outside of the county, municipality, or region providing funding for a fee?</b>	No
<b>Q19: Who operates the collection(s)?</b>	Disposal Vendor, Location Hosting Collection, Municipal Employees
<b>Q20: What materials are most difficult to handle? Please select all that apply.</b>	Latex Paint

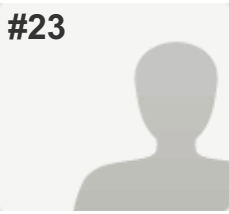
## Local Special Waste Collections

### **Q21: Please provide your contact information:**

Name	Barb Stauffer
Affiliation (Company or Municipality)	Roscommon county Recycling Committee
Phone	989-275-3163
E-mail	barb.stauffer@macd.org

---

#23

**COMPLETE****Collector:** Web Link 1 (Web Link)**Started:** Wednesday, November 18, 2015 1:02:41 PM**Last Modified:** Wednesday, November 18, 2015 1:19:23 PM**Time Spent:** 00:16:41**IP Address:** 64.233.193.242

## PAGE 1

**Q1: Do you offer special waste collection options for your area (e.g. your county, municipality, and/or region)?**

Yes

Examples of special wastes include household hazardous waste, used oil, conditionally exempt small quantity generator hazardous waste, and construction and demolition waste.

## PAGE 2

**Q2: Please identify the geographic area you service (e.g. counties, municipalities, and/or regions):**

Riverview 48193, Downriver area, Wayne County

**Q3: Please identify what waste types you collect. Please select all that apply.**

Electronics other than TVs or CRTs , Pallets,

Lead Acid Batteries,

Batteries other than Lead Acid Batteries ,

Used Oil (Transmission Fluid, Motor Oil, Cutting Oil) ,

Comments:

We collect above for Riverview residents, electronics for Wayne County and other Hohaz is collected by Wayne County DOE

**Q4: What type(s) of collection option(s) are currently offered? Please select all that apply.**

Both permanent and 1-day collection location(s) ,

Please explain materials collected at permanent vs. one day events if both are offered:

As described above

**Q5: For one day collections, are materials stored overnight?**

No

**Q6: For permanent collections, how long are materials typically stored before shipment? Please select all that apply. Identify specific waste types in the comment field if the duration varies based on waste types collected.**

A few months

**Q7: Are the collection option(s) offered expected to change?**

No

**Q8: How many years have the current collection options been offered?**

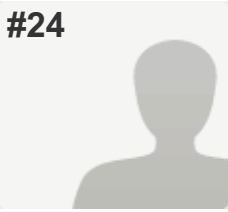
More than 5

## Local Special Waste Collections

<b>Q9: For permanent collections, approximately how many hours of collection are offered weekly, on average? Please select the most accurate option.</b>	40
<b>Q10: Are weekend collection hours offered for most materials?</b>	Yes, Comments: Sat am
<b>Q11: Are collection options limited to warmer months (e.g. April through October or May through September)?</b>	No
<b>Q12: Where are collections located? Please select all that apply. Identify specific waste types in the comment field if the collection locations are limited to specific waste types(s).</b>	Landfill(s)
<b>Q13: Is access to overnight storage locations restricted?</b>	Yes
<b>Q14: Do overnight storage locations possess containment adequate to collect spills and prevent release of the special waste constituents to a drain or the ground?</b>	Yes
<b>Q15: Please provide a brief description of how the collections identified are funded:</b>	
Local recycling from landfill revenue, county Hohaz from tipping fee	
<b>Q16: Are collections options offered for small business, school, municipal, church, and/or non-profit waste types? If yes, but waste types are limited, please explain which waste types are accepted from non-household locations?</b>	No
<b>Q17: If collections are offered for non-household waste, is a fee involved?</b>	No, Comments: Paper shredding
<b>Q18: Are collection options offered for households outside of the county, municipality, or region providing funding for a fee?</b>	No
<b>Q19: Who operates the collection(s)?</b>	Disposal Vendor, Municipal Employees
<b>Q20: What materials are most difficult to handle? Please select all that apply.</b>	Antifreeze, Gas & Fuel Oil, Please explain the difficulties: Recyclers put gas and antifreeze in used oil
<b>Q21: Please provide your contact information:</b>	
Name	Bob Bobeck
Affiliation (Company or Municipality)	Riverview landfill
Phone	7347855927
E-mail	rbobek@cityofriverview.com



#24

**COMPLETE****Collector:** Web Link 1 (Web Link)**Started:** Wednesday, November 18, 2015 1:19:06 PM**Last Modified:** Wednesday, November 18, 2015 1:21:54 PM**Time Spent:** 00:02:47**IP Address:** 50.197.121.29

## PAGE 1

**Q1: Do you offer special waste collection options for your area (e.g. your county, municipality, and/or region)?**

**Examples of special wastes include household hazardous waste, used oil, conditionally exempt small quantity generator hazardous waste, and construction and demolition waste.**

No,

If "no" please identify sponsors of special waste collections options in your area.

We don't have the funds to offer HHW collection, but we do partner with Wacker Chemical & Anderson Development (Adrian, MI) to host a household hazardous waste collection event each spring -- Wacker & Anderson alternate years providing location and funding of program.

## PAGE 2

**Q2: Please identify the geographic area you service (e.g. counties, municipalities, and/or regions):**

*Respondent skipped this question*

**Q3: Please identify what waste types you collect. Please select all that apply.**

*Respondent skipped this question*

**Q4: What type(s) of collection option(s) are currently offered? Please select all that apply.**

*Respondent skipped this question*

**Q5: For one day collections, are materials stored overnight?**

*Respondent skipped this question*

**Q6: For permanent collections, how long are materials typically stored before shipment? Please select all that apply. Identify specific waste types in the comment field if the duration varies based on waste types collected.**

*Respondent skipped this question*

**Q7: Are the collection option(s) offered expected to change?**

*Respondent skipped this question*

**Q8: How many years have the current collection options been offered?**

*Respondent skipped this question*

**Q9: For permanent collections, approximately how many hours of collection are offered weekly, on average? Please select the most accurate option.**

*Respondent skipped this question*

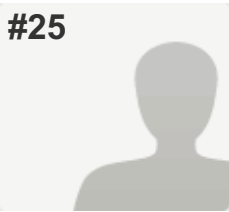
**Q10: Are weekend collection hours offered for most materials?**

*Respondent skipped this question*

## Local Special Waste Collections

<b>Q11: Are collection options limited to warmer months (e.g. April through October or May through September)?</b>	<i>Respondent skipped this question</i>
<b>Q12: Where are collections located? Please select all that apply. Identify specific waste types in the comment field if the collection locations are limited to specific waste types(s).</b>	<i>Respondent skipped this question</i>
<b>Q13: Is access to overnight storage locations restricted?</b>	<i>Respondent skipped this question</i>
<b>Q14: Do overnight storage locations possess containment adequate to collect spills and prevent release of the special waste constituents to a drain or the ground?</b>	<i>Respondent skipped this question</i>
<b>Q15: Please provide a brief description of how the collections identified are funded:</b>	<i>Respondent skipped this question</i>
<b>Q16: Are collections options offered for small business, school, municipal, church, and/or non-profit waste types? If yes, but waste types are limited, please explain which waste types are accepted from non-household locations?</b>	<i>Respondent skipped this question</i>
<b>Q17: If collections are offered for non-household waste, is a fee involved?</b>	<i>Respondent skipped this question</i>
<b>Q18: Are collection options offered for households outside of the county, municipality, or region providing funding for a fee?</b>	<i>Respondent skipped this question</i>
<b>Q19: Who operates the collection(s)?</b>	<i>Respondent skipped this question</i>
<b>Q20: What materials are most difficult to handle? Please select all that apply.</b>	<i>Respondent skipped this question</i>
<b>Q21: Please provide your contact information:</b>	
Name	Diana Schroeder
Affiliation (Company or Municipality)	Lenawee County Solid Waste Dept.
Phone	517-264-4511
E-mail	Diana.Schroeder@lenawee.mi.us

#25



**COMPLETE**

**Collector:** Web Link 1 (Web Link)

**Started:** Wednesday, November 18, 2015 1:27:02 PM

**Last Modified:** Wednesday, November 18, 2015 1:34:54 PM

**Time Spent:** 00:07:52

**IP Address:** 173.161.3.161

PAGE 1

**Q1: Do you offer special waste collection options for your area (e.g. your county, municipality, and/or region)?**

Yes

Examples of special wastes include household hazardous waste, used oil, conditionally exempt small quantity generator hazardous waste, and construction and demolition waste.

PAGE 2

**Q2: Please identify the geographic area you service (e.g. counties, municipalities, and/or regions):**

Berrien County, MI

**Q3: Please identify what waste types you collect. Please select all that apply.**

Pharmaceuticals/Medications,  
Electronics other than TVs or CRTs ,  
TVs and/or CRTs, Lead Acid Batteries,  
Batteries other than Lead Acid Batteries,  
Light Bulbs,  
Thermostats or other Devices containing Elemental Mercury  
,  
Sharps/Needles,  
Used Oil (Transmission Fluid, Motor Oil, Cutting Oil) ,  
Antifreeze, Corrosive Material (Acids/Bases),  
Solvent Based Paints & Stains, Gas & Fuel Oil ,  
Solvents, Toner, Appliances containing Freon,  
Pesticides, Animal & Vegetable Oil,  
Household Cleaners, Propane Canisters,  
Lighter Fluid & Lamp Oil

**Q4: What type(s) of collection option(s) are currently offered? Please select all that apply.**

One day collection location(s)

## Local Special Waste Collections

<b>Q5: For one day collections, are materials stored overnight?</b>	No
<b>Q6: For permanent collections, how long are materials typically stored before shipment? Please select all that apply. Identify specific waste types in the comment field if the duration varies based on waste types collected.</b>	Not offered
<b>Q7: Are the collection option(s) offered expected to change?</b>	No
<b>Q8: How many years have the current collection options been offered?</b>	More than 5
<b>Q9: For permanent collections, approximately how many hours of collection are offered weekly, on average? Please select the most accurate option.</b>	Not offered
<b>Q10: Are weekend collection hours offered for most materials?</b>	Yes
<b>Q11: Are collection options limited to warmer months (e.g. April through October or May through September)?</b>	Yes, Please specify month(s) when collections are offered if answering yes: April - October
<b>Q12: Where are collections located? Please select all that apply. Identify specific waste types in the comment field if the collection locations are limited to specific waste types(s).</b>	Other Municipal Property, Landfill(s), Waste type(s) and/or other comments: County Park Properties
<b>Q13: Is access to overnight storage locations restricted?</b>	<i>Respondent skipped this question</i>
<b>Q14: Do overnight storage locations possess containment adequate to collect spills and prevent release of the special waste constituents to a drain or the ground?</b>	<i>Respondent skipped this question</i>
<b>Q15: Please provide a brief description of how the collections identified are funded:</b>	
Landfill Use Funds, fees charged to residents, and donations	
<b>Q16: Are collections options offered for small business, school, municipal, church, and/or non-profit waste types? If yes, but waste types are limited, please explain which waste types are accepted from non-household locations?</b>	No
<b>Q17: If collections are offered for non-household waste, is a fee involved?</b>	<i>Respondent skipped this question</i>
<b>Q18: Are collection options offered for households outside of the county, municipality, or region providing funding for a fee?</b>	No
<b>Q19: Who operates the collection(s)?</b>	Disposal Vendor, Municipal Employees

## Local Special Waste Collections

**Q20: What materials are most difficult to handle?**  
**Please select all that apply.**

TVs and/or CRTs, Appliances containing Freon,  
Please explain the difficulties:  
Issue lies mainly in the large size and weight of these  
items; handling these heavy items at a 1 day  
collection event.

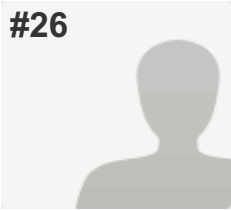
---

**Q21: Please provide your contact information:**

Name	Jill Adams
Affiliation (Company or Municipality)	Berrien County Parks Department
Phone	269-983-7111 x8234
E-mail	jadams@berriencounty.org
Special Waste Collection Website	www.berriencounty.org/recycle

---

#26



**COMPLETE**

**Collector:** Web Link 1 (Web Link)

**Started:** Wednesday, November 18, 2015 1:04:11 PM

**Last Modified:** Wednesday, November 18, 2015 1:48:28 PM

**Time Spent:** 00:44:17

**IP Address:** 96.36.1.125

---

PAGE 1

---

**Q1: Do you offer special waste collection options for your area (e.g. your county, municipality, and/or region)?**

Yes

Examples of special wastes include household hazardous waste, used oil, conditionally exempt small quantity generator hazardous waste, and construction and demolition waste.

---

PAGE 2

---

**Q2: Please identify the geographic area you service (e.g. counties, municipalities, and/or regions):**

Emmet County, surrounding counties (northern Michigan), and state-wide for Clean Sweep items.

---

## Local Special Waste Collections

**Q3: Please identify what waste types you collect. Please select all that apply.**

Pharmaceuticals/Medications,  
Electronics other than TVs or CRTs ,  
TVs and/or CRTs, Drywall, Shingles, Pallets,  
Lead Acid Batteries,  
Batteries other than Lead Acid Batteries ,  
Light Bulbs,  
Thermostats or other Devices containing Elemental Mercury  
,  
Sharps/Needles,  
Used Oil (Transmission Fluid, Motor Oil, Cutting Oil) ,  
Antifreeze, Corrosive Material (Acids/Bases),  
Solvent Based Paints & Stains , Latex Paints,  
Gas & Fuel Oil , Solvents,  
Appliances containing Freon, Pesticides, Asbestos,  
Smoke Alarms, Household Cleaners,  
Propane Canisters, Fire Extinguishers,  
Lighter Fluid & Lamp Oil ,  
Comments:  
There are 7 drop sites for pharmaceuticals/Meds in Emmet County ([www.PillsInThePOD.com](http://www.PillsInThePOD.com)), everything else accepted at our Drop off Center.

**Q4: What type(s) of collection option(s) are currently offered? Please select all that apply.**

Both permanent and 1-day collection location(s) ,  
Please explain materials collected at permanent vs. one day events if both are offered:  
We have a 'Hazardous Recyclables' Drop off open 6-days/week for motor oil, oil filters, antifreeze, batteries, e-waste, cfls, flourescents. Latex paint is accepted spring-fall for recycling. Shingles, pallets, appliances accepted 6 days/week for recycling. HHW collections occur 3 xs/year.

**Q5: For one day collections, are materials stored overnight?**

No,  
Comments:  
Our three one-day collections for the remaining hazardous materials are removed same-day by the contractor (Drug & Laboratory Disposal)

**Q6: For permanent collections, how long are materials typically stored before shipment? Please select all that apply. Identify specific waste types in the comment field if the duration varies based on waste types collected.**

A few weeks, A few months ,  
Waste types and/or other comments:  
Most materials ship out every few weeks, but in the winter months some things may take a couple months between pick-ups. We also take mattresses for recycling year-round!

## Local Special Waste Collections

<b>Q7: Are the collection option(s) offered expected to change?</b>	<p>No,</p> <p>Please explain the reason prompting the change: Other than continuing to expand! We are always looking for the next thing...!</p>
<b>Q8: How many years have the current collection options been offered?</b>	<p>More than 5,</p> <p>Comments: Most of our materials have been accepted for many years (greater than 20!) All have been taken for more than five years.</p>
<b>Q9: For permanent collections, approximately how many hours of collection are offered weekly, on average? Please select the most accurate option.</b>	<p>40,</p> <p>Comments: Actually we are open 47 hours/week, year-round for all materials listed except those taken on HHW days.</p>
<b>Q10: Are weekend collection hours offered for most materials?</b>	<p>Yes,</p> <p>Comments: Open Saturdays 8 AM - 3 PM</p>
<b>Q11: Are collection options limited to warmer months (e.g. April through October or May through September)?</b>	<p>Yes,</p> <p>Please specify month(s) when collections are offered if answering yes: These items accepted for recycling April 1 - Nov 1: Plant plastics, Latex Paint</p>
<b>Q12: Where are collections located? Please select all that apply. Identify specific waste types in the comment field if the collection locations are limited to specific waste types(s).</b>	<p>Hospital(s), Police Department(s), Retailer(s), Transfer Station(s),</p> <p>Waste type(s) and/or other comments: Hospital has a sharps drop-off, all Police Depts take pharmaceuticals, 10 hardware stores and libraries have battery buckets we service, our Drop-off Center which includes our Transfer Station accepts all.</p>
<b>Q13: Is access to overnight storage locations restricted?</b>	<p>Yes,</p> <p>Comments: Fully fenced and gated facility. The Hazardous recyclables building is closed, locked, and has tertiary containment. Surveillance cameras throughout.</p>
<b>Q14: Do overnight storage locations possess containment adequate to collect spills and prevent release of the special waste constituents to a drain or the ground?</b>	<p>Yes,</p> <p>Comments: All hazardous liquids contained within buildings that have tertiary containment, or, as in the case of motor oil, is collected in a tank with tertiary containment.</p>
<b>Q15: Please provide a brief description of how the collections identified are funded:</b>	
<p>HHW days and most hazardous recyclables funded by transfer station funds. Pesticides funded by Clean Sweep. Some funded by fees for service (asphalt shingles, tires, mattresses, latex paint) which are less than disposal costs.</p>	



## Local Special Waste Collections

**Q16: Are collections options offered for small business, school, municipal, church, and/or non-profit waste types? If yes, but waste types are limited, please explain which waste types are accepted from non-household locations?**

Yes,

Explain which types are accepted from non-household locations:  
CESQGs only.

**Q17: If collections are offered for non-household waste, is a fee involved?**

Yes,

Comments:  
Fees for all bulky recyclables (mattresses, shingles, untreated wood) are about half the disposal cost.

**Q18: Are collection options offered for households outside of the county, municipality, or region providing funding for a fee?**

Yes

**Q19: Who operates the collection(s)?**

Disposal Vendor, Municipal Employees

**Q20: What materials are most difficult to handle? Please select all that apply.**

TVs and/or CRTs, Sharps/Needles,  
Please explain the difficulties:  
Sharps show up on our recycling sort lines all the time; we are trying to shift from accepting them in plastic jugs taped and labeled at our gatehouse, to having hospital/pharmacy drop-offs only, to try to keep them ending up in our system. TVs are cumbersome and heavy and hard to package for shipping.

**Q21: Please provide your contact information:**

Name

Elisa Seltzer

Affiliation (Company or Municipality)

Emmet County Dept. Public Works

Phone

231 348-0640

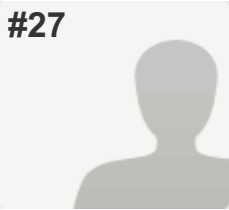
E-mail

eseltzer@emmetcounty.org

Special Waste Collection Website

www.emmetRecycling.org,  
www.PillsInThePOD.org

#27



**COMPLETE**

**Collector:** Web Link 1 (Web Link)

**Started:** Wednesday, November 18, 2015 2:22:27 PM

**Last Modified:** Wednesday, November 18, 2015 2:38:15 PM

**Time Spent:** 00:15:48

**IP Address:** 199.150.172.203

PAGE 1

**Q1: Do you offer special waste collection options for your area (e.g. your county, municipality, and/or region)?**

Yes

Examples of special wastes include household hazardous waste, used oil, conditionally exempt small quantity generator hazardous waste, and construction and demolition waste.

PAGE 2

**Q2: Please identify the geographic area you service (e.g. counties, municipalities, and/or regions):**

Van Buren County

**Q3: Please identify what waste types you collect. Please select all that apply.**

Pharmaceuticals/Medications,  
Electronics other than TVs or CRTs ,  
TVs and/or CRTs, Lead Acid Batteries,  
Batteries other than Lead Acid Batteries,  
Light Bulbs,  
Thermostats or other Devices containing Elemental Mercury  
,  
Sharps/Needles, Antifreeze,  
Corrosive Material (Acids/Bases),  
Solvent Based Paints & Stains, Latex Paints,  
Gas & Fuel Oil, Solvents, Toner,  
Appliances containing Freon, Pesticides, Asbestos,  
Smoke Alarms, Animal & Vegetable Oil,  
Household Cleaners, Propane Canisters,  
Fire Extinguishers, Lighter Fluid & Lamp Oil

## Local Special Waste Collections

<b>Q4: What type(s) of collection option(s) are currently offered? Please select all that apply.</b>	Both permanent and 1-day collection location(s) , Please explain materials collected at permanent vs. one day events if both are offered: Electronics (CRTs/TVs and anything with a cord)- Permanent Collection Sites Twice a year we hold a HHW collection with the addition of Passenger tires and Latex Paint.
<b>Q5: For one day collections, are materials stored overnight?</b>	No
<b>Q6: For permanent collections, how long are materials typically stored before shipment? Please select all that apply. Identify specific waste types in the comment field if the duration varies based on waste types collected.</b>	Not offered
<b>Q7: Are the collection option(s) offered expected to change?</b>	Yes,  Please explain the reason prompting the change: We would like to be able to build a program and place that can except any and all recycling with convenient location and collection hours.
<b>Q8: How many years have the current collection options been offered?</b>	3,  Comments: Three years with the Conservation District and many years prior with MSUE.
<b>Q9: For permanent collections, approximately how many hours of collection are offered weekly, on average? Please select the most accurate option.</b>	40,  Comments: We partner with the Community Thrift Shop that hosts a storage trailer that store the electronics until the recycling contractor schedules a pick up.
<b>Q10: Are weekend collection hours offered for most materials?</b>	Yes,  Comments: Two weekends a year for HHW, tires, latex paint Monday-Saturday 10am-5pm for electronics many police depts. host red box for medication
<b>Q11: Are collection options limited to warmer months (e.g. April through October or May through September)?</b>	Yes,  Please specify month(s) when collections are offered if answering yes: HHW is held in June and September
<b>Q12: Where are collections located? Please select all that apply. Identify specific waste types in the comment field if the collection locations are limited to specific waste types(s).</b>	Municipal Maintenance Building(s),  Police Department(s), Retailer(s),  Waste type(s) and/or other comments: Municipality maintenance building: HHW, tires, latex paint Police dept.: meds Retailer/Non-Profit Thrift Shop: Electronics
<b>Q13: Is access to overnight storage locations restricted?</b>	Yes

## Local Special Waste Collections

**Q14: Do overnight storage locations possess containment adequate to collect spills and prevent release of the special waste constituents to a drain or the ground?**

Yes

**Q15: Please provide a brief description of how the collections identified are funded:**

County funds much of the programs to facilitate the collections and then village/city/townships are able to pledge funding to support residents with the cost to recycle. otherwise the cost is on the resident at \$1.25 per pound for HHW, \$1 per can for latex paint, state grant funded for passenger tires, free for meds, free for all electronics except CRTs/TVs.

**Q16: Are collections options offered for small business, school, municipal, church, and/or non-profit waste types? If yes, but waste types are limited, please explain which waste types are accepted from non-household locations?**

No

**Q17: If collections are offered for non-household waste, is a fee involved?**

Comments: N/A

**Q18: Are collection options offered for households outside of the county, municipality, or region providing funding for a fee?**

Yes,

Comments:

We wouldn't not except recycling items from residents as long as they were going to pay for what we charge to get the items for recycling unless the quantity was to much for our vendors to handle.

**Q19: Who operates the collection(s)?**

Disposal Vendor,

Comments:

The Conservation District works to set up the collection but vendors do the handling and proper recycling of the materials.

**Q20: What materials are most difficult to handle? Please select all that apply.**

Sharps/Needles,

Please explain the difficulties:

People call about Sharps and Needles frequently and most places DO NOT take them. It would be great to have hospitals and doc offices hold a place for safe disposal.

**Q21: Please provide your contact information:**

Name

AJ Brucks

Affiliation (Company or Municipality)

Van Buren Conservation District

Phone

269-657-4030 ext. 5

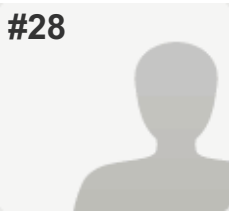
E-mail

alison.brucks@mi.nacdnet.net

Special Waste Collection Website

www.VanBurenCD.org

#28



**COMPLETE**

**Collector:** Web Link 1 (Web Link)

**Started:** Wednesday, November 18, 2015 2:39:29 PM

**Last Modified:** Wednesday, November 18, 2015 2:55:36 PM

**Time Spent:** 00:16:07

**IP Address:** 75.144.84.188

PAGE 1

**Q1: Do you offer special waste collection options for your area (e.g. your county, municipality, and/or region)?**

Yes

Examples of special wastes include household hazardous waste, used oil, conditionally exempt small quantity generator hazardous waste, and construction and demolition waste.

PAGE 2

**Q2: Please identify the geographic area you service (e.g. counties, municipalities, and/or regions):**

Plymouth Township

**Q3: Please identify what waste types you collect. Please select all that apply.**

Pharmaceuticals/Medications,  
Electronics other than TVs or CRTs ,  
TVs and/or CRTs, Lead Acid Batteries,  
Batteries other than Lead Acid Batteries,  
Thermostats or other Devices containing Elemental Mercury  
,  
Sharps/Needles,  
Used Oil (Transmission Fluid, Motor Oil, Cutting Oil) ,  
Antifreeze, Corrosive Material (Acids/Bases),  
Solvent Based Paints & Stains, Latex Paints,  
Gas & Fuel Oil, Solvents, Toner, Pesticides,  
Smoke Alarms, Household Cleaners,  
Propane Canisters, Fire Extinguishers,  
Lighter Fluid & Lamp Oil

**Q4: What type(s) of collection option(s) are currently offered? Please select all that apply.**

One day collection location(s)

**Q5: For one day collections, are materials stored overnight?**

No

## Local Special Waste Collections

<b>Q6: For permanent collections, how long are materials typically stored before shipment? Please select all that apply. Identify specific waste types in the comment field if the duration varies based on waste types collected.</b>	Not offered
<b>Q7: Are the collection option(s) offered expected to change?</b>	No
<b>Q8: How many years have the current collection options been offered?</b>	More than 5
<b>Q9: For permanent collections, approximately how many hours of collection are offered weekly, on average? Please select the most accurate option.</b>	Not offered
<b>Q10: Are weekend collection hours offered for most materials?</b>	<i>Respondent skipped this question</i>
<b>Q11: Are collection options limited to warmer months (e.g. April through October or May through September)?</b>	<i>Respondent skipped this question</i>
<b>Q12: Where are collections located? Please select all that apply. Identify specific waste types in the comment field if the collection locations are limited to specific waste types(s).</b>	Other
<b>Q13: Is access to overnight storage locations restricted?</b>	<i>Respondent skipped this question</i>
<b>Q14: Do overnight storage locations possess containment adequate to collect spills and prevent release of the special waste constituents to a drain or the ground?</b>	<i>Respondent skipped this question</i>
<b>Q15: Please provide a brief description of how the collections identified are funded:</b>	
User fee - paid with funds collected as part of the curbside residential collection fees.	
<b>Q16: Are collections options offered for small business, school, municipal, church, and/or non-profit waste types? If yes, but waste types are limited, please explain which waste types are accepted from non-household locations?</b>	No
<b>Q17: If collections are offered for non-household waste, is a fee involved?</b>	<i>Respondent skipped this question</i>
<b>Q18: Are collection options offered for households outside of the county, municipality, or region providing funding for a fee?</b>	No
<b>Q19: Who operates the collection(s)?</b>	Disposal Vendor, Municipal Employees, Comments: Vendor is contracted to handle wastes. Township manages traffic flow.
<b>Q20: What materials are most difficult to handle? Please select all that apply.</b>	Pharmaceuticals/Medications, Please explain the difficulties: cannot accept controlled meds.

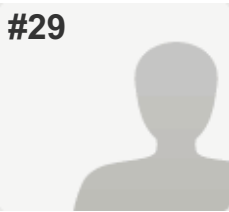
## Local Special Waste Collections

### **Q21: Please provide your contact information:**

Name	Susan Vignoe
Affiliation (Company or Municipality)	Charter Township of Plymouth
Phone	734-414-1452
E-mail	svignoe@plymouthtp.org
Special Waste Collection Website	<a href="http://www.plymouthtp.org/Departments/PublicServices/SolidWaste/HHW.htm">http://www.plymouthtp.org/Departments/PublicServices/SolidWaste/HHW.htm</a>

---

#29



**COMPLETE**

**Collector:** Web Link 1 (Web Link)

**Started:** Wednesday, November 18, 2015 3:35:56 PM

**Last Modified:** Wednesday, November 18, 2015 3:56:51 PM

**Time Spent:** 00:20:54

**IP Address:** 24.247.140.118

PAGE 1

**Q1: Do you offer special waste collection options for your area (e.g. your county, municipality, and/or region)?**

Yes

Examples of special wastes include household hazardous waste, used oil, conditionally exempt small quantity generator hazardous waste, and construction and demolition waste.

PAGE 2

**Q2: Please identify the geographic area you service (e.g. counties, municipalities, and/or regions):**

Manistee, Mason-Lake, and Oceana counties

**Q3: Please identify what waste types you collect. Please select all that apply.**

Pharmaceuticals/Medications,  
Electronics other than TVs or CRTs ,  
TVs and/or CRTs, Lead Acid Batteries,  
Batteries other than Lead Acid Batteries,  
Light Bulbs,  
Thermostats or other Devices containing Elemental Mercury  
,  
Sharps/Needles,  
Used Oil (Transmission Fluid, Motor Oil, Cutting Oil) ,  
Antifreeze, Corrosive Material (Acids/Bases),  
Solvent Based Paints & Stains, Gas & Fuel Oil ,  
Solvents, Toner, Appliances containing Freon,  
Pesticides, Smoke Alarms, Animal & Vegetable Oil ,  
Household Cleaners, Propane Canisters,  
Fire Extinguishers, Lighter Fluid & Lamp Oil

**Q4: What type(s) of collection option(s) are currently offered? Please select all that apply.**

One day collection location(s)



## Local Special Waste Collections

<b>Q5: For one day collections, are materials stored overnight?</b>	No,  Comments: Materials should not be stored overnight, but, due to an unanticipated turnout, several filled dumpsters were left at the site over the weekend.
<b>Q6: For permanent collections, how long are materials typically stored before shipment? Please select all that apply. Identify specific waste types in the comment field if the duration varies based on waste types collected.</b>	Not offered
<b>Q7: Are the collection option(s) offered expected to change?</b>	Yes,  Please explain the reason prompting the change: There is great demand for styrofoam collection here in Manistee county.
<b>Q8: How many years have the current collection options been offered?</b>	More than 5
<b>Q9: For permanent collections, approximately how many hours of collection are offered weekly, on average? Please select the most accurate option.</b>	Not offered
<b>Q10: Are weekend collection hours offered for most materials?</b>	No
<b>Q11: Are collection options limited to warmer months (e.g. April through October or May through September)?</b>	Yes,  Please specify month(s) when collections are offered if answering yes: once a year, 1st week in august
<b>Q12: Where are collections located? Please select all that apply. Identify specific waste types in the comment field if the collection locations are limited to specific waste types(s).</b>	Municipal Maintenance Building(s)
<b>Q13: Is access to overnight storage locations restricted?</b>	No
<b>Q14: Do overnight storage locations possess containment adequate to collect spills and prevent release of the special waste constituents to a drain or the ground?</b>	No
<b>Q15: Please provide a brief description of how the collections identified are funded:</b>  by county townships and additional county allocations	
<b>Q16: Are collections options offered for small business, school, municipal, church, and/or non-profit waste types? If yes, but waste types are limited, please explain which waste types are accepted from non-household locations?</b>	No
<b>Q17: If collections are offered for non-household waste, is a fee involved?</b>	No

## Local Special Waste Collections

**Q18: Are collection options offered for households outside of the county, municipality, or region providing funding for a fee?**

No

**Q19: Who operates the collection(s)?**

Location Hosting Collection,

Comments:

The Manistee Conservation District at the Manistee County Road Commission

**Q20: What materials are most difficult to handle? Please select all that apply.**

Pallets, Lead Acid Batteries,

Batteries other than Lead Acid Batteries,

Used Oil (Transmission Fluid, Motor Oil, Cutting Oil),

Corrosive Material (Acids/Bases), Gas & Fuel Oil

**Q21: Please provide your contact information:**

Name

Susan Spencer

Affiliation (Company or Municipality)

Manistee Conservation District

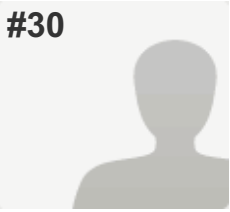
Phone

231-889-9666, ext.3

E-mail

susan.spencer@macd.org

#30

**INCOMPLETE****Collector:** Web Link 1 (Web Link)**Started:** Wednesday, November 18, 2015 12:38:08 PM**Last Modified:** Wednesday, November 18, 2015 3:57:33 PM**Time Spent:** 03:19:24**IP Address:** 199.150.145.71

PAGE 1

**Q1: Do you offer special waste collection options for your area (e.g. your county, municipality, and/or region)?**

Yes

Examples of special wastes include household hazardous waste, used oil, conditionally exempt small quantity generator hazardous waste, and construction and demolition waste.

PAGE 2

**Q2: Please identify the geographic area you service (e.g. counties, municipalities, and/or regions):**

Respondent skipped this question

**Q3: Please identify what waste types you collect. Please select all that apply.**

Respondent skipped this question

**Q4: What type(s) of collection option(s) are currently offered? Please select all that apply.**

Respondent skipped this question

**Q5: For one day collections, are materials stored overnight?**

Respondent skipped this question

**Q6: For permanent collections, how long are materials typically stored before shipment? Please select all that apply. Identify specific waste types in the comment field if the duration varies based on waste types collected.**

Respondent skipped this question

**Q7: Are the collection option(s) offered expected to change?**

Respondent skipped this question

**Q8: How many years have the current collection options been offered?**

Respondent skipped this question

**Q9: For permanent collections, approximately how many hours of collection are offered weekly, on average? Please select the most accurate option.**

Respondent skipped this question

**Q10: Are weekend collection hours offered for most materials?**

Respondent skipped this question

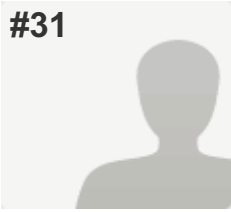
**Q11: Are collection options limited to warmer months (e.g. April through October or May through September)?**

Respondent skipped this question

## Local Special Waste Collections

<b>Q12: Where are collections located? Please select all that apply. Identify specific waste types in the comment field if the collection locations are limited to specific waste types(s).</b>	<i>Respondent skipped this question</i>
<b>Q13: Is access to overnight storage locations restricted?</b>	<i>Respondent skipped this question</i>
<b>Q14: Do overnight storage locations possess containment adequate to collect spills and prevent release of the special waste constituents to a drain or the ground?</b>	<i>Respondent skipped this question</i>
<b>Q15: Please provide a brief description of how the collections identified are funded:</b>	<i>Respondent skipped this question</i>
<b>Q16: Are collections options offered for small business, school, municipal, church, and/or non-profit waste types? If yes, but waste types are limited, please explain which waste types are accepted from non-household locations?</b>	<i>Respondent skipped this question</i>
<b>Q17: If collections are offered for non-household waste, is a fee involved?</b>	<i>Respondent skipped this question</i>
<b>Q18: Are collection options offered for households outside of the county, municipality, or region providing funding for a fee?</b>	<i>Respondent skipped this question</i>
<b>Q19: Who operates the collection(s)?</b>	<i>Respondent skipped this question</i>
<b>Q20: What materials are most difficult to handle? Please select all that apply.</b>	<i>Respondent skipped this question</i>
<b>Q21: Please provide your contact information:</b>	<i>Respondent skipped this question</i>

#31

**INCOMPLETE****Collector:** Web Link 1 (Web Link)**Started:** Wednesday, November 18, 2015 6:56:26 PM**Last Modified:** Wednesday, November 18, 2015 6:56:41 PM**Time Spent:** 00:00:14**IP Address:** 97.83.156.220

## PAGE 1

**Q1: Do you offer special waste collection options for your area (e.g. your county, municipality, and/or region)?**

Yes

Examples of special wastes include household hazardous waste, used oil, conditionally exempt small quantity generator hazardous waste, and construction and demolition waste.

## PAGE 2

**Q2: Please identify the geographic area you service (e.g. counties, municipalities, and/or regions):**

Respondent skipped this question

**Q3: Please identify what waste types you collect. Please select all that apply.**

Respondent skipped this question

**Q4: What type(s) of collection option(s) are currently offered? Please select all that apply.**

Respondent skipped this question

**Q5: For one day collections, are materials stored overnight?**

Respondent skipped this question

**Q6: For permanent collections, how long are materials typically stored before shipment? Please select all that apply. Identify specific waste types in the comment field if the duration varies based on waste types collected.**

Respondent skipped this question

**Q7: Are the collection option(s) offered expected to change?**

Respondent skipped this question

**Q8: How many years have the current collection options been offered?**

Respondent skipped this question

**Q9: For permanent collections, approximately how many hours of collection are offered weekly, on average? Please select the most accurate option.**

Respondent skipped this question

**Q10: Are weekend collection hours offered for most materials?**

Respondent skipped this question

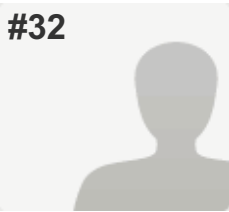
**Q11: Are collection options limited to warmer months (e.g. April through October or May through September)?**

Respondent skipped this question

## Local Special Waste Collections

<b>Q12: Where are collections located? Please select all that apply. Identify specific waste types in the comment field if the collection locations are limited to specific waste types(s).</b>	<i>Respondent skipped this question</i>
<b>Q13: Is access to overnight storage locations restricted?</b>	<i>Respondent skipped this question</i>
<b>Q14: Do overnight storage locations possess containment adequate to collect spills and prevent release of the special waste constituents to a drain or the ground?</b>	<i>Respondent skipped this question</i>
<b>Q15: Please provide a brief description of how the collections identified are funded:</b>	<i>Respondent skipped this question</i>
<b>Q16: Are collections options offered for small business, school, municipal, church, and/or non-profit waste types? If yes, but waste types are limited, please explain which waste types are accepted from non-household locations?</b>	<i>Respondent skipped this question</i>
<b>Q17: If collections are offered for non-household waste, is a fee involved?</b>	<i>Respondent skipped this question</i>
<b>Q18: Are collection options offered for households outside of the county, municipality, or region providing funding for a fee?</b>	<i>Respondent skipped this question</i>
<b>Q19: Who operates the collection(s)?</b>	<i>Respondent skipped this question</i>
<b>Q20: What materials are most difficult to handle? Please select all that apply.</b>	<i>Respondent skipped this question</i>
<b>Q21: Please provide your contact information:</b>	<i>Respondent skipped this question</i>

#32



**COMPLETE**

**Collector:** Web Link 1 (Web Link)

**Started:** Thursday, November 19, 2015 11:44:48 AM

**Last Modified:** Thursday, November 19, 2015 11:52:36 AM

**Time Spent:** 00:07:47

**IP Address:** 207.74.55.3

PAGE 1

**Q1: Do you offer special waste collection options for your area (e.g. your county, municipality, and/or region)?**

Yes

Examples of special wastes include household hazardous waste, used oil, conditionally exempt small quantity generator hazardous waste, and construction and demolition waste.

PAGE 2

**Q2: Please identify the geographic area you service (e.g. counties, municipalities, and/or regions):**

Muskegon county

**Q3: Please identify what waste types you collect. Please select all that apply.**

Batteries other than Lead Acid Batteries ,  
Light Bulbs,  
Thermostats or other Devices containing Elemental Mercury  
,  
Used Oil (Transmission Fluid, Motor Oil, Cutting Oil) ,  
Antifreeze, Corrosive Material (Acids/Bases),  
Solvent Based Paints & Stains , Gas & Fuel Oil ,  
Solvents, Pesticides, Household Cleaners,  
Propane Canisters, Fire Extinguishers,  
Lighter Fluid & Lamp Oil

**Q4: What type(s) of collection option(s) are currently offered? Please select all that apply.**

Both permanent and 1-day collection location(s) ,  
Please explain materials collected at permanent vs. one day events if both are offered:  
HHW at permanent only. At one day HHW combined with electronics, paper shredding, and tire recycling.

**Q5: For one day collections, are materials stored overnight?**

No

## Local Special Waste Collections

<b>Q6: For permanent collections, how long are materials typically stored before shipment? Please select all that apply. Identify specific waste types in the comment field if the duration varies based on waste types collected.</b>	A few months , Waste types and/or other comments: storage in a safety storage building (prefab)
<b>Q7: Are the collection option(s) offered expected to change?</b>	Yes,  Please explain the reason prompting the change: I would like to offer more locations or longer hours if funds are available for staff
<b>Q8: How many years have the current collection options been offered?</b>	More than 5
<b>Q9: For permanent collections, approximately how many hours of collection are offered weekly, on average? Please select the most accurate option.</b>	2,  Comments: May - October two Fridays a month from 1-3 PM
<b>Q10: Are weekend collection hours offered for most materials?</b>	Yes,  Comments: twice a year one day collection in a lot
<b>Q11: Are collection options limited to warmer months (e.g. April through October or May through September)?</b>	Yes,  Please specify month(s) when collections are offered if answering yes: One day in April, One day in October for Saturday May-October at permanent facility
<b>Q12: Where are collections located? Please select all that apply. Identify specific waste types in the comment field if the collection locations are limited to specific waste types(s).</b>	Municipal Maintenance Building(s),  Other Municipal Property
<b>Q13: Is access to overnight storage locations restricted?</b>	No
<b>Q14: Do overnight storage locations possess containment adequate to collect spills and prevent release of the special waste constituents to a drain or the ground?</b>	Yes
<b>Q15: Please provide a brief description of how the collections identified are funded:</b>  A portion of the County landfill tipping fee revenue is used to pay.	
<b>Q16: Are collections options offered for small business, school, municipal, church, and/or non-profit waste types? If yes, but waste types are limited, please explain which waste types are accepted from non-household locations?</b>	No
<b>Q17: If collections are offered for non-household waste, is a fee involved?</b>	<i>Respondent skipped this question</i>
<b>Q18: Are collection options offered for households outside of the county, municipality, or region providing funding for a fee?</b>	No



## Local Special Waste Collections

**Q19: Who operates the collection(s)?**

Municipal Employees

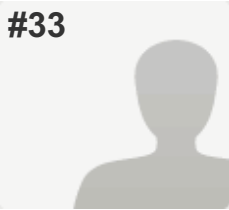
**Q20: What materials are most difficult to handle?**  
Please select all that apply.

*Respondent skipped this question*

**Q21: Please provide your contact information:**

Name	Gregory Leverence
Affiliation (Company or Municipality)	Muskegon County
Phone	231-724-6003
E-mail	leverencegr@co.muskegon.mi.us
Special Waste Collection Website	www.co.muskegon.mi.us/hhw

#33



**COMPLETE**

**Collector:** Web Link 1 (Web Link)

**Started:** Thursday, November 19, 2015 9:04:46 AM

**Last Modified:** Thursday, November 19, 2015 5:04:04 PM

**Time Spent:** 07:59:18

**IP Address:** 68.188.135.184

PAGE 1

**Q1: Do you offer special waste collection options for your area (e.g. your county, municipality, and/or region)?**

Yes

Examples of special wastes include household hazardous waste, used oil, conditionally exempt small quantity generator hazardous waste, and construction and demolition waste.

PAGE 2

**Q2: Please identify the geographic area you service (e.g. counties, municipalities, and/or regions):**

Grand Traverse County residents can bring up to 150lbs to each event at no charge. Material in excess of 150lbs or material from out of county is charged at \$1.30/lb.

Clean Sweep pesticides are received at no charge for both in and out of county.

**Q3: Please identify what waste types you collect. Please select all that apply.**

Pharmaceuticals/Medications, Lead Acid Batteries,

Batteries other than Lead Acid Batteries,

Light Bulbs,

Thermostats or other Devices containing Elemental Mercury

,

Sharps/Needles,

Used Oil (Transmission Fluid, Motor Oil, Cutting Oil),

Antifreeze, Corrosive Material (Acids/Bases),

Solvent Based Paints & Stains, Latex Paints,

Gas & Fuel Oil, Solvents, Toner, Pesticides,

Smoke Alarms, Animal & Vegetable Oil,

Household Cleaners, Propane Canisters,

Fire Extinguishers, Lighter Fluid & Lamp Oil

## Local Special Waste Collections

<b>Q4: What type(s) of collection option(s) are currently offered? Please select all that apply.</b>	Both permanent and 1-day collection location(s) , Please explain materials collected at permanent vs. one day events if both are offered: Permanent household battery collection locations are currently offered throughout the county. No permanent HHW collections are provided.
<b>Q5: For one day collections, are materials stored overnight?</b>	No
<b>Q6: For permanent collections, how long are materials typically stored before shipment? Please select all that apply. Identify specific waste types in the comment field if the duration varies based on waste types collected.</b>	A few months , Six months , Waste types and/or other comments: A contractor picks up batteries from the various drop-off locations (county, township and fire department buildings) and takes the batteries to their facility for sorting by chemistry and storage prior to transport. For the past two years, the HHW disposal contractor has picked up stored batteries while in the area for one day HHW events.
<b>Q7: Are the collection option(s) offered expected to change?</b>	Yes,  Please explain the reason prompting the change: The county is currently exploring delivery of resource recovery services through contract. Some services may be subject to change (eg. battery collection locations). One day events are expected to be maintained.
<b>Q8: How many years have the current collection options been offered?</b>	More than 5
<b>Q9: For permanent collections, approximately how many hours of collection are offered weekly, on average? Please select the most accurate option.</b>	40,  Comments: Battery drop off locations are open during business hours at the county, township and fire department locations.
<b>Q10: Are weekend collection hours offered for most materials?</b>	No,  Comments: One of the one day HHW events is typically held on a Saturday.
<b>Q11: Are collection options limited to warmer months (e.g. April through October or May through September)?</b>	Yes,  Please specify month(s) when collections are offered if answering yes: Our one day events are spread between late March through early November. Batteries are collected throughout the year.

## Local Special Waste Collections

**Q12: Where are collections located? Please select all that apply. Identify specific waste types in the comment field if the collection locations are limited to specific waste types(s).**

Municipal Office Building(s),  
Municipal Maintenance Building(s),  
Other Municipal Property,  
Waste type(s) and/or other comments:  
One day HHW collections are held at the County DPW maintenance garage and at a Road Commission garage. Battery drop off locations include county office buildings, township office buildings and fire departments.

**Q13: Is access to overnight storage locations restricted?**

Yes

**Q14: Do overnight storage locations possess containment adequate to collect spills and prevent release of the special waste constituents to a drain or the ground?**

Yes

**Q15: Please provide a brief description of how the collections identified are funded:**

The county collects a \$2.00/ton landfill surcharge to support HHW collections/disposal as well as other resource recovery activities.

**Q16: Are collections options offered for small business, school, municipal, church, and/or non-profit waste types? If yes, but waste types are limited, please explain which waste types are accepted from non-household locations?**

Yes,  
Explain which types are accepted from non-household locations:  
The county accepts CESQG waste by appointment at our one day HHW collections events. Material is screened for safety considerations and potential for additional disposal costs.

**Q17: If collections are offered for non-household waste, is a fee involved?**

Yes,  
Comments:  
CESQG may bring up to 150lbs at no charge. Material in excess of 150lbs is charged at \$1.30/lb. Any additional disposal costs for non-household waste (eg. for cylinders) are charged to the CESQG.

**Q18: Are collection options offered for households outside of the county, municipality, or region providing funding for a fee?**

Yes,  
Comments:  
Out of county residents may attend one day HHW events and material will be charged \$1.30/lb. Clean Sweep pesticides are accepted free of charge.

**Q19: Who operates the collection(s)?**

Disposal Vendor, Municipal Employees,  
Comments:  
Municipal employees check people in, administer invoicing for any charges and administer the CESQG appointments.

## Local Special Waste Collections

**Q20: What materials are most difficult to handle?**  
**Please select all that apply.**

Solvent Based Paints & Stains, Latex Paint,

Please explain the difficulties:

Paint accounts for most of the volume accepted at the one day HHW collection events: nearly 75,000 pounds over the four events of 2015, or 53% of total volume.

---

**Q21: Please provide your contact information:**

Name

Susie Shipman

Affiliation (Company or Municipality)

Grand Traverse County Resource Recovery

Phone

2319956067

E-mail

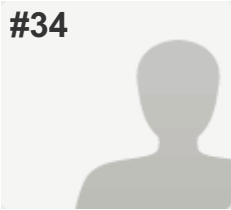
sshipman@grandtraverse.org

Special Waste Collection Website

recyclesmart.info

---

#34



**COMPLETE**

**Collector:** Web Link 1 (Web Link)

**Started:** Wednesday, October 28, 2015 3:28:37 PM

**Last Modified:** Friday, November 20, 2015 9:14:21 AM

**Time Spent:** Over a week

**IP Address:** 64.20.198.98

---

PAGE 1

---

**Q1: Do you offer special waste collection options for your area (e.g. your county, municipality, and/or region)?**

Yes

Examples of special wastes include household hazardous waste, used oil, conditionally exempt small quantity generator hazardous waste, and construction and demolition waste.

---

PAGE 2

---

**Q2: Please identify the geographic area you service (e.g. counties, municipalities, and/or regions):**

All of Kalamazoo County (with the exception of the City of Galesburg - they currently are not under a contract with us), Berrien County, Calhoun County and a few townships in Van Buren County (Almena, Antwerp and Paw Paw). We are also a Clean Sweep site and will accept pesticides (only) from any end-user in Michigan.

---

## Local Special Waste Collections

**Q3: Please identify what waste types you collect. Please select all that apply.**

Electronics other than TVs or CRTs ,  
TVs and/or CRTs, Lead Acid Batteries,  
Batteries other than Lead Acid Batteries,  
Light Bulbs,  
Thermostats or other Devices containing Elemental Mercury  
,  
Used Oil (Transmission Fluid, Motor Oil, Cutting Oil) ,  
Antifreeze, Corrosive Material (Acids/Bases),  
Solvent Based Paints & Stains, Gas & Fuel Oil ,  
Solvents, Toner, Pesticides,  
Animal & Vegetable Oil , Household Cleaners,  
Propane Canisters, Fire Extinguishers,  
Lighter Fluid & Lamp Oil ,  
Comments:  
We will accept aerosolized inhalers, UNUSED sharps and also UNUSED epi-pens or similar prefilled syringes. The light bulbs we accept are any fluorescent or mercury bulbs (Sodium Vapor, HID, Metal Halide), some neon and LEDs. The only propane cylinders that we accept are the little portable grill or heater style that weigh around a pound.

**Q4: What type(s) of collection option(s) are currently offered? Please select all that apply.**

Permanent collection location(s),  
Please explain materials collected at permanent vs. one day events if both are offered:  
We have offered 1-day satellite collections in the past but we don't anymore.

**Q5: For one day collections, are materials stored overnight?**

Not offered

**Q6: For permanent collections, how long are materials typically stored before shipment? Please select all that apply. Identify specific waste types in the comment field if the duration varies based on waste types collected.**

A few weeks , A few months ,  
Waste types and/or other comments:  
It does vary - smaller waste streams such as aerosolized inhalers, unused sharps, fusees and organic peroxides may be stored until we have a full 5-gallon bucket to ship but we typically ship most if not all waste streams at the end of each quarter.

**Q7: Are the collection option(s) offered expected to change?**

No

**Q8: How many years have the current collection options been offered?**

More than 5,  
Comments:  
Approximately 18 years (electronics were added on several years ago)

## Local Special Waste Collections

**Q9: For permanent collections, approximately how many hours of collection are offered weekly, on average? Please select the most accurate option.**

10,

Comments:

16 hours/week plus 1 Saturday per month at 4 hours.

**Q10: Are weekend collection hours offered for most materials?**

Yes,

Comments:

Our once a month Saturday collections are offered for all of the same materials we accept during the week.

**Q11: Are collection options limited to warmer months (e.g. April through October or May through September)?**

No,

Please specify month(s) when collections are offered if answering yes:

Our program is open year-round, only closed during week of County Fair (August), Friday and Saturday of the Street Rods Convention (Sept) - because these are both events held on the fairgrounds and from Christmas Eve through New Years Day.

**Q12: Where are collections located? Please select all that apply. Identify specific waste types in the comment field if the collection locations are limited to specific waste types(s).**

Other Municipal Property,

Waste type(s) and/or other comments:

The Kalamazoo County HHW Center is located on the Kalamazoo County Fairgrounds. Medications are accepted at 6 area police departments (RedMed Box Program) and also a few local pharmacies (Yellow Jug/Old Drug Program); We also maintain a list of places people can go with materials we don't accept - such as larger propane cylinders to a local Amerigas, Freon-containing appliances to a local appliance store, etc.

**Q13: Is access to overnight storage locations restricted?**

Yes,

Comments:

Our storage buildings are all locked and within a locked gated area.

**Q14: Do overnight storage locations possess containment adequate to collect spills and prevent release of the special waste constituents to a drain or the ground?**

Yes,

Comments:

There are no floor drains in any of our buildings and the areas where liquid chemicals are stored are all bermed and all entries slope down to middle of room.

**Q15: Please provide a brief description of how the collections identified are funded:**

In-county participating municipalities pay 20% of our operational costs and 100% of their disposal fees (based on participation - which is tracked); the remaining 80% of operational costs is funded through the county general fund. Out of county participating municipalities pay 100% of operational costs plus 100% of their disposal fees. Again based on participation.



## Local Special Waste Collections

**Q16: Are collections options offered for small business, school, municipal, church, and/or non-profit waste types? If yes, but waste types are limited, please explain which waste types are accepted from non-household locations?**

Yes,

Explain which types are accepted from non-household locations:

All of the same waste types that are accepted from households are also accepted from non-household locations but they must be in Kalamazoo County.

**Q17: If collections are offered for non-household waste, is a fee involved?**

Yes,

Comments:

Schools, CESQGs, municipals, churches and non-profits pay 100% disposal costs plus a processing fee based on time of service at \$13.75/15 minutes. They are also required to fill out necessary paperwork for the DEQ and are only serviced by appointment during hours the facility is closed to the public.

**Q18: Are collection options offered for households outside of the county, municipality, or region providing funding for a fee?**

No,

Comments:

Only those municipalities/counties that are under contract with the HHW Center are able to participate. As listed in #2

**Q19: Who operates the collection(s)?**

Municipal Employees,

Comments: We are all county employees.

**Q20: What materials are most difficult to handle? Please select all that apply.**

TVs and/or CRTs,

Used Oil (Transmission Fluid, Motor Oil, Cutting Oil) ,

Pesticides,

Please explain the difficulties:

TVs and/or CRTs because of their size/weight - unloading them from back seats of vehicles or low trunks and then stacking the CRT TVs on pallets according to contractor guidelines is a physically challenging process plus the cost for recycling them keeps increasing. Pesticides - many bottles are giving off noxious fumes and/or leaking and need to be contained into Zip-loc-type bags and many bags of pesticides are falling apart and giving off dust clouds and also need to be further contained. Used oil - bulking larger containers in our tank can be challenging and their are often contaminants in oil such as water, solvent, antifreeze, dead mice, leaves, cat litter, etc. Fortunately we have many safety measures in place and our staff has become quite accustomed to the many challenges.

**Q21: Please provide your contact information:**

Name

Cynthia Foster

Affiliation (Company or Municipality)

Kalamazoo County Government

Phone

269-383-8742

E-mail

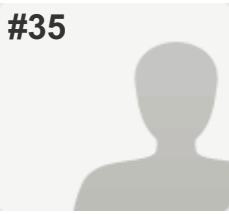
csfost@kalcounty.com

Special Waste Collection Website

kalcounty.com/hhw



#35

**COMPLETE****Collector:** Web Link 1 (Web Link)**Started:** Wednesday, November 18, 2015 4:48:48 PM**Last Modified:** Friday, November 20, 2015 11:23:53 AM**Time Spent:** Over a day**IP Address:** 96.27.111.20

## PAGE 1

**Q1: Do you offer special waste collection options for your area (e.g. your county, municipality, and/or region)?**

Yes

Examples of special wastes include household hazardous waste, used oil, conditionally exempt small quantity generator hazardous waste, and construction and demolition waste.

## PAGE 2

**Q2: Please identify the geographic area you service (e.g. counties, municipalities, and/or regions):**

Barry County

**Q3: Please identify what waste types you collect. Please select all that apply.**

Pharmaceuticals/Medications, Lead Acid Batteries, Batteries other than Lead Acid Batteries, Light Bulbs, Thermostats or other Devices containing Elemental Mercury, Used Oil (Transmission Fluid, Motor Oil, Cutting Oil), Antifreeze, Corrosive Material (Acids/Bases), Solvent Based Paints & Stains, Gas & Fuel Oil, Solvents, Pesticides, Asbestos, Household Cleaners

**Q4: What type(s) of collection option(s) are currently offered? Please select all that apply.**

One day collection location(s)

**Q5: For one day collections, are materials stored overnight?**

Yes,

Comments: oil only

**Q6: For permanent collections, how long are materials typically stored before shipment? Please select all that apply. Identify specific waste types in the comment field if the duration varies based on waste types collected.**

*Respondent skipped this question*

## Local Special Waste Collections

<b>Q7: Are the collection option(s) offered expected to change?</b>	No
<b>Q8: How many years have the current collection options been offered?</b>	More than 5
<b>Q9: For permanent collections, approximately how many hours of collection are offered weekly, on average? Please select the most accurate option.</b>	<i>Respondent skipped this question</i>
<b>Q10: Are weekend collection hours offered for most materials?</b>	Yes
<b>Q11: Are collection options limited to warmer months (e.g. April through October or May through September)?</b>	Yes, Please specify month(s) when collections are offered if answering yes: May and September
<b>Q12: Where are collections located? Please select all that apply. Identify specific waste types in the comment field if the collection locations are limited to specific waste types(s).</b>	Other, Waste type(s) and/or other comments: Barry County Fairgrounds
<b>Q13: Is access to overnight storage locations restricted?</b>	Yes
<b>Q14: Do overnight storage locations possess containment adequate to collect spills and prevent release of the special waste constituents to a drain or the ground?</b>	Yes
<b>Q15: Please provide a brief description of how the collections identified are funded:</b>  Solid Waste Oversight Committee Funds	
<b>Q16: Are collections options offered for small business, school, municipal, church, and/or non-profit waste types? If yes, but waste types are limited, please explain which waste types are accepted from non-household locations?</b>	No
<b>Q17: If collections are offered for non-household waste, is a fee involved?</b>	Comments: not offered
<b>Q18: Are collection options offered for households outside of the county, municipality, or region providing funding for a fee?</b>	Comments: not offered
<b>Q19: Who operates the collection(s)?</b>	Disposal Vendor, Municipal Employees
<b>Q20: What materials are most difficult to handle? Please select all that apply.</b>	<i>Respondent skipped this question</i>

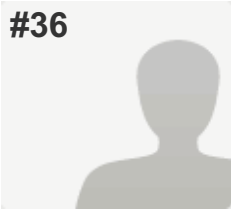
## Local Special Waste Collections

### **Q21: Please provide your contact information:**

Name	Jodi Trantham
Affiliation (Company or Municipality)	Barry-Eaton District Health Department
Phone	269-798-4104
E-mail	jtrantham@bedhd.org

---

#36



**COMPLETE**

**Collector:** Web Link 1 (Web Link)

**Started:** Monday, November 23, 2015 3:15:58 PM

**Last Modified:** Monday, November 23, 2015 3:26:45 PM

**Time Spent:** 00:10:46

**IP Address:** 12.218.56.53

---

PAGE 1

---

**Q1: Do you offer special waste collection options for your area (e.g. your county, municipality, and/or region)?**

Yes

Examples of special wastes include household hazardous waste, used oil, conditionally exempt small quantity generator hazardous waste, and construction and demolition waste.

---

PAGE 2

---

**Q2: Please identify the geographic area you service (e.g. counties, municipalities, and/or regions):**

Townships: Addison, Groveland, Independence, Oakland, Orion, Oxford, Rose, Waterford

Cities: Lake Angelus, Rochester, Rochester Hills

Villages: Leonard, Lake Orion, Oxford

---

## Local Special Waste Collections

**Q3: Please identify what waste types you collect. Please select all that apply.**

Pharmaceuticals/Medications,  
Electronics other than TVs or CRTs ,  
TVs and/or CRTs, Lead Acid Batteries,  
Batteries other than Lead Acid Batteries ,  
Light Bulbs,  
Thermostats or other Devices containing Elemental Mercury  
,  
Sharps/Needles,  
Used Oil (Transmission Fluid, Motor Oil, Cutting Oil) ,  
Antifreeze, Corrosive Material (Acids/Bases),  
Solvent Based Paints & Stains , Latex Paints,  
Gas & Fuel Oil , Solvents, Toner, Pesticides,  
Asbestos, Smoke Alarms, Animal & Vegetable Oil ,  
Household Cleaners, Propane Canisters,  
Fire Extinguishers, Lighter Fluid & Lamp Oil ,  
Comments: Asbestos shingles only

**Q4: What type(s) of collection option(s) are currently offered? Please select all that apply.**

One day collection location(s)

**Q5: For one day collections, are materials stored overnight?**

No

**Q6: For permanent collections, how long are materials typically stored before shipment? Please select all that apply. Identify specific waste types in the comment field if the duration varies based on waste types collected.**

*Respondent skipped this question*

**Q7: Are the collection option(s) offered expected to change?**

No

**Q8: How many years have the current collection options been offered?**

More than 5

**Q9: For permanent collections, approximately how many hours of collection are offered weekly, on average? Please select the most accurate option.**

*Respondent skipped this question*

**Q10: Are weekend collection hours offered for most materials?**

Yes,  
Comments: All collections are held on Saturdays

**Q11: Are collection options limited to warmer months (e.g. April through October or May through September)?**

Yes,  
Please specify month(s) when collections are offered if answering yes:  
April - October

## Local Special Waste Collections

<b>Q12: Where are collections located? Please select all that apply. Identify specific waste types in the comment field if the collection locations are limited to specific waste types(s).</b>	School(s), Other Municipal Property
<b>Q13: Is access to overnight storage locations restricted?</b>	Comments: n/a - no hhw stored overnight
<b>Q14: Do overnight storage locations possess containment adequate to collect spills and prevent release of the special waste constituents to a drain or the ground?</b>	Comments: n/a - no hhw stored overnight
<b>Q15: Please provide a brief description of how the collections identified are funded:</b> The municipalities pay for the program	
<b>Q16: Are collections options offered for small business, school, municipal, church, and/or non-profit waste types? If yes, but waste types are limited, please explain which waste types are accepted from non-household locations?</b>	No
<b>Q17: If collections are offered for non-household waste, is a fee involved?</b>	Comments: n/a
<b>Q18: Are collection options offered for households outside of the county, municipality, or region providing funding for a fee?</b>	Yes
<b>Q19: Who operates the collection(s)?</b>	Disposal Vendor
<b>Q20: What materials are most difficult to handle? Please select all that apply.</b>	<i>Respondent skipped this question</i>
<b>Q21: Please provide your contact information:</b>	
Name	Whitney Calio
Affiliation (Company or Municipality)	Oakland County EDCA
Phone	248-858-2071
E-mail	caliow@oakgov.com
Special Waste Collection Website	www.nohaz.com